



ATLAS LH ASSIST ARM

ASSEMBLY GUIDE



INDIANA

GREG SMITH EQUIPMENT SALES INC.
5800 MASSACHUSETTS AVE.
INDIANAPOLIS, IN 46218

PHONE: (800) 262-1950
FAX: (317) 542-1448

DELAWARE

GREG SMITH EQUIPMENT, INC.
250 EXECUTIVE DRIVE, SUITE 1
NEWARK, DE 19702

PHONE: (800) 715-1950
FAX: (302) 894-9136

GEORGIA

GREG SMITH EQUIPMENT, INC.
5405 BUFORD HWY.
NORCROSS, GA 30071

PHONE: (800) 768-4104
FAX: (678) 781-0149

ARIZONA

GREG SMITH EQUIPMENT, INC.
8399 W VAN BUREN ST., SUITE 210
TOLLESON, AZ 85353

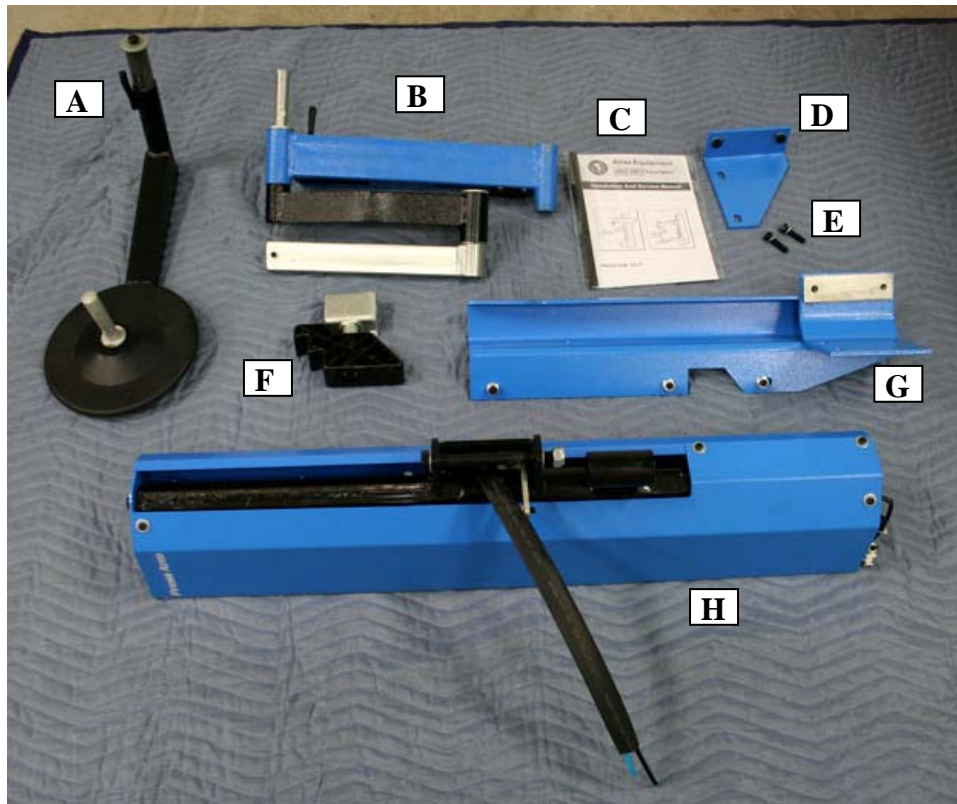
PHONE: (800) 602-9928
FAX: (602) 490-3495

Before you start

Your Atlas LH Assist Arm comes packaged in a sturdy plywood crate. Carefully open the crate.



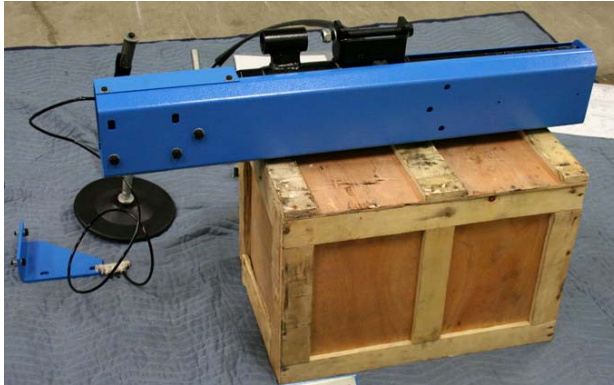
Use the easy open tabs. Do not smash or force the crate open. Unpack and layout each piece carefully and verify that all parts are present:



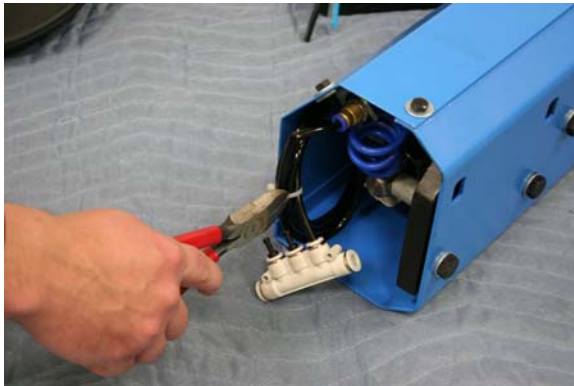
- A – Lifting Arm with Disc
- B – Pressing Arm
- C – Instruction Manual
- D – Support Bracket
- E – 10mm Screws
- F – Pressing Block
- G – Column Bracket
- H – Assist Arm Column

Assembly

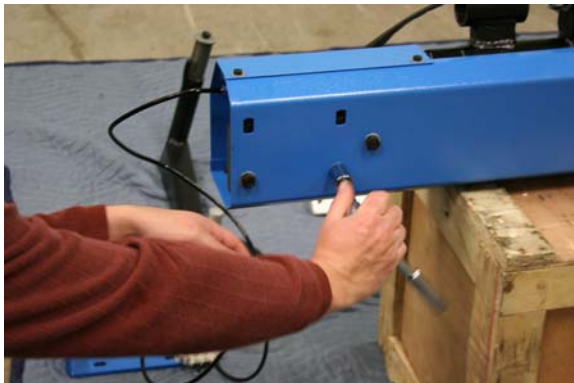
STEP 1: Place the Assist Arm Column on a sturdy work surface as shown. Allow yourself access to the bottom portion of the Column:



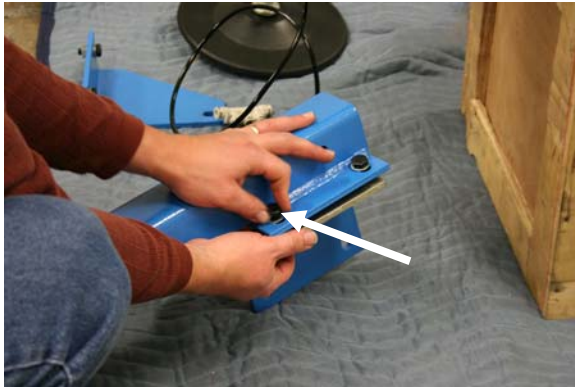
STEP 2: Remove the wire tie to free the 5-way fitting from inside the Column.



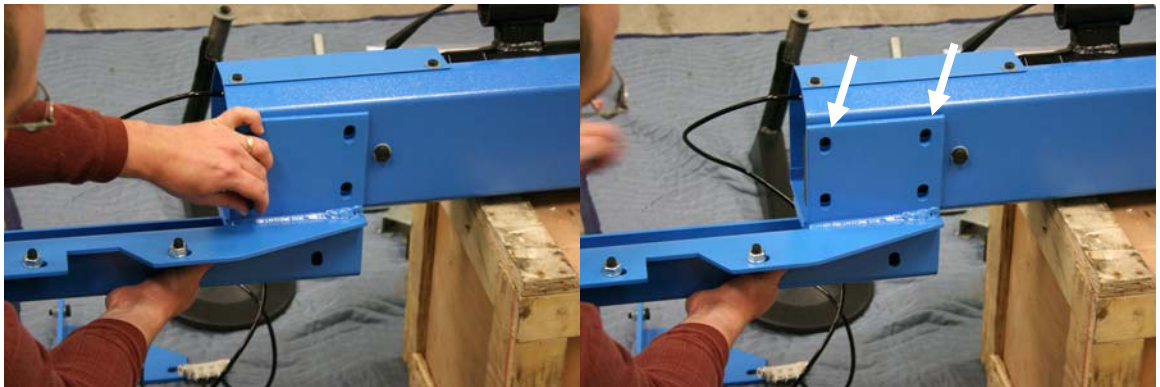
STEP 3: Remove the mounting bolts from the bottom portion of the Column.



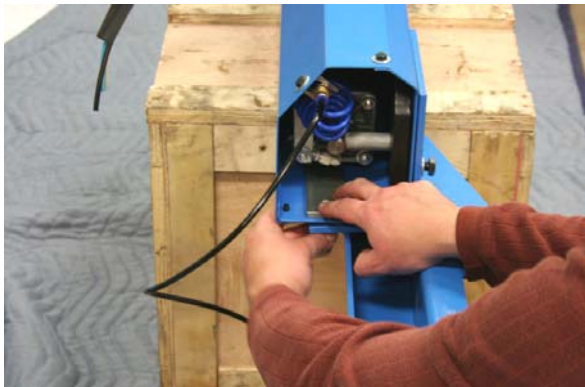
STEP 4: Remove the support block from the Column Bracket.



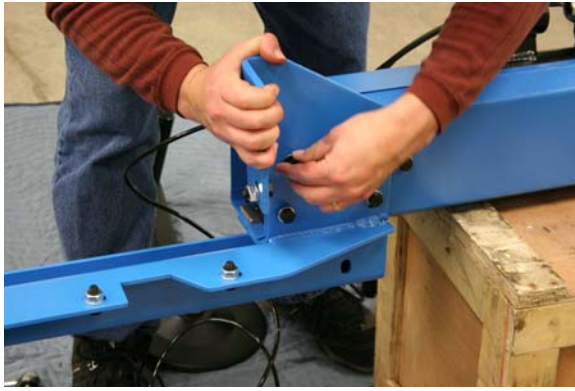
STEP 5: Position the Column Bracket against the Column as shown. Install the mounting bolts removed in Step 3. Do not install the bolts into the locations indicated by the arrows, set these aside for now. Do not tighten the bolts completely. This will allow you to adjust the bracket's position later.



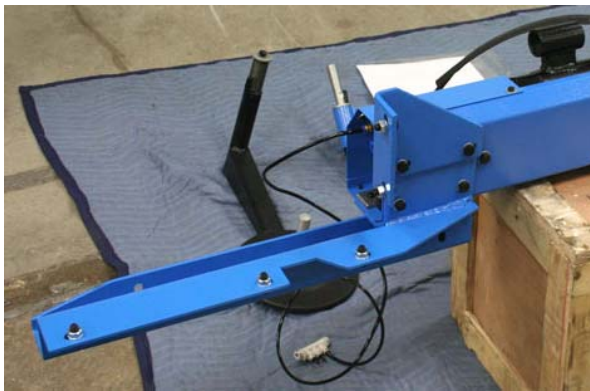
STEP 6: Set the support block inside the Column as shown. Install the bolts removed in Step 4 through the Bracket, Column, and into the support block.



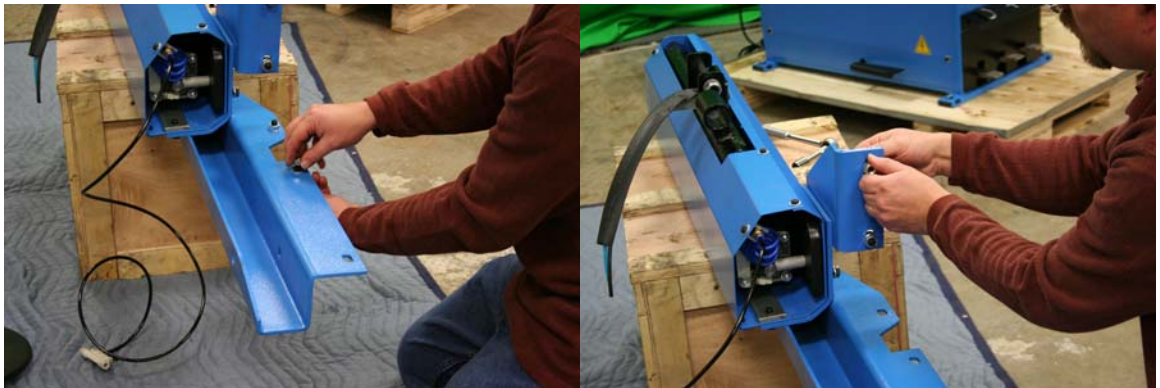
STEP 7: Install the Support Bracket with the 2 remaining bolts (removed in Step 3) as shown.



STEP 8: The Column and brackets are now ready to install on the tire changer. Make sure the brackets are attached as shown below before proceeding.



STEP 9: Remove the attaching bolts from the Column brackets.



STEP 10: Remove the side cover from the Tire Changer.



STEP 11: Lift the Column into position as shown below. **Note:** The Column is extremely heavy. Able bodied (adult) assistance or the use of a lifting device will be required.



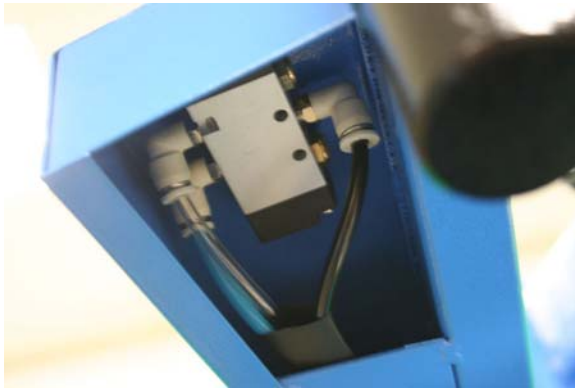
STEP 12: Install the attaching bolts removed in Step 9. Install the top bolts first, and then install the bolts on the rear. Do not tighten the bolts fully until all are installed.



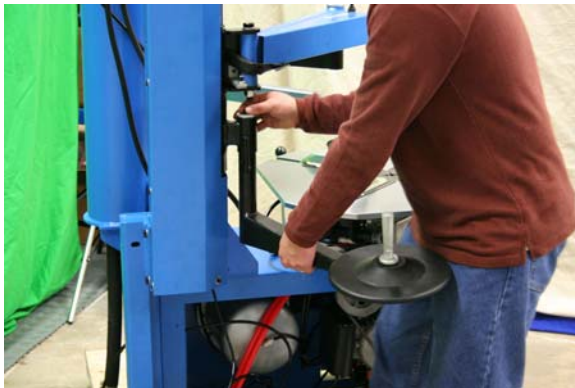
STEP 13: Remove the pivot bolt from the bracket shown below. Insert the Pressing Arm into the bracket and reinstall the pivot bolt.



STEP 14: Route the air lines through the middle of the Pressing Arm. Attach the lines as shown.



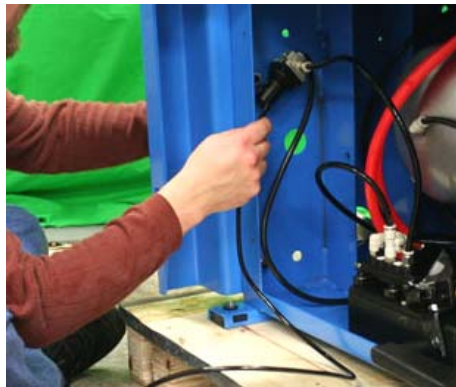
STEP 15: Install the Lifting Arm and Disc as shown.



STEP 16: Remove the small socket head screw from the Pressing Arm. Slide the Pressing Block onto the Arm and reinstall the screw.



STEP 17: Feed the Assist Arm air line through the rear of the Tire Changer chassis. You must disconnect the 5 way fitting to feed the line through.



STEP 18: Locate the main air line inside the tire changer chassis (this line connects to the front of the lubricator/regulator and enters through the right side of the chassis). Cut this line and install the 5 way fitting on the air line as shown. The line from the Assist Arm will also reconnect to this fitting.



STEP 19: Tighten all mounting bolts. Connect the machine to a compressed air supply and check for air leaks. Install the side cover. Your LH Assist Arm is now ready to use.

