

INSTALLATION & OPERATION MANUAL



Atlas SP-8000

8000 lb. Capacity

2 Post Baseplate Storage Lift



Atlas Automotive Equipment
www.atlasautoequipment.com
(866) 898-2604

Read this entire manual before operation begins.

Record below the following information which is located on the serial number data plate.

Serial No. _____

Model No. _____

Date of Installation _____

Contents

Important Information	4
Specifications	5
Installation Requirements	7
Installation Procedure	9
Bleeding Procedure	25
Operation Instructions.	27
Maintenance Schedule.	28
Troubleshooting.	29
Parts Illustration	30
Parts List	31

Important Information

1. Always inspect the lift for damage and make note of any damage on the bill of lading.
2. In case of freight damage, call the truck line immediately and report the damage as a freight claim.
3. Make sure you have extra help or heavy duty lifting equipment when unloading and assembling the lift.
4. Please read the safety procedures and operating instructions in this manual before operating lift. Keep this manual near lift at all times. Make sure all operators read this manual.
5. **NOTE: Are you installing in a level location? (Lift must be anchored in place.)**
6. Make sure you have enough room to maneuver during installation.
7. Never raise a car until you have double checked all bolts, nuts and hose fittings.
8. Always lower the lift to locks before going under the vehicle or storing another vehicle underneath lift. Never allow anyone to go under the lift when raising or lowering.

This is a vehicle lift installation/operation manual and no attempt is made or implied herein to instruct the user in lifting methods particular to an individual application. Rather, the contents of this manual are intended as a basis for operation and maintenance of the unit as it stands alone or as it is intended and anticipated to be used in conjunction with other equipment.

Proper application of the equipment described herein is limited to the parameters detailed in the specifications and the uses set forth in the descriptive passages. Any other proposed application of this equipment should be documented and submitted in writing to the factory for examination. The user assumes full responsibility for any equipment damage, personal injury, or alteration of the equipment described in this manual or any subsequent damages.

Read this manual thoroughly before installing, operating, or maintaining this lift. When done with installation, be sure to return documents to package and give all materials to lift owner/operator. When installation is complete be sure to run lift up and down a few cycles with and without "typical" vehicle loaded on lift.

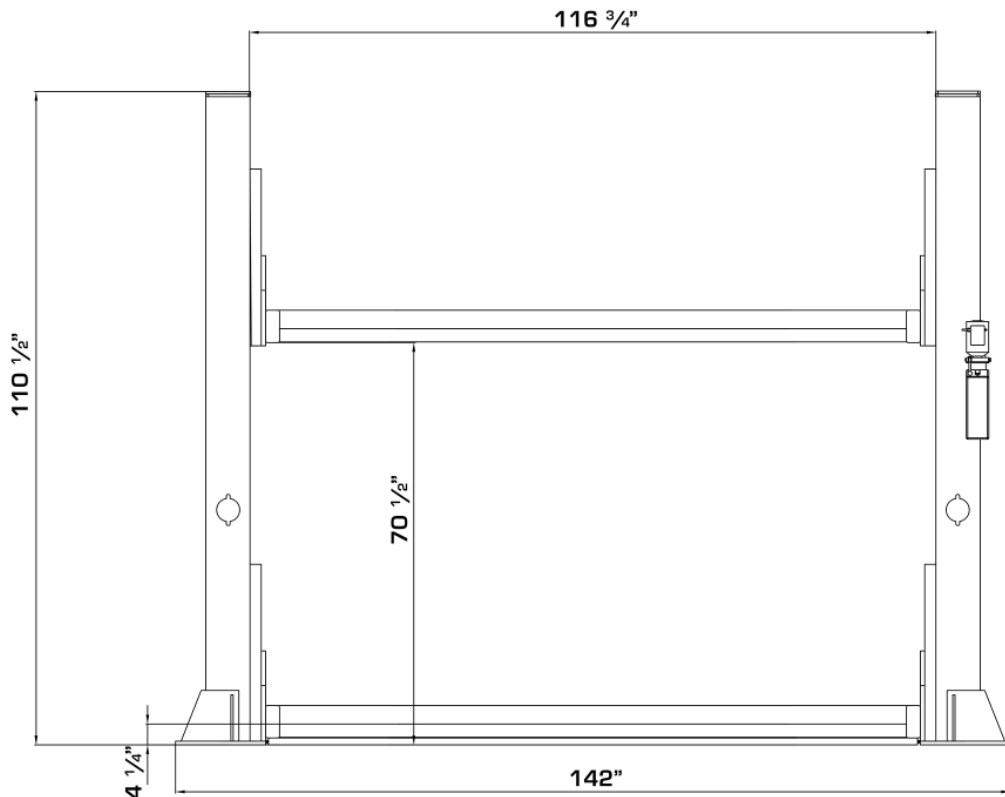
Specifications

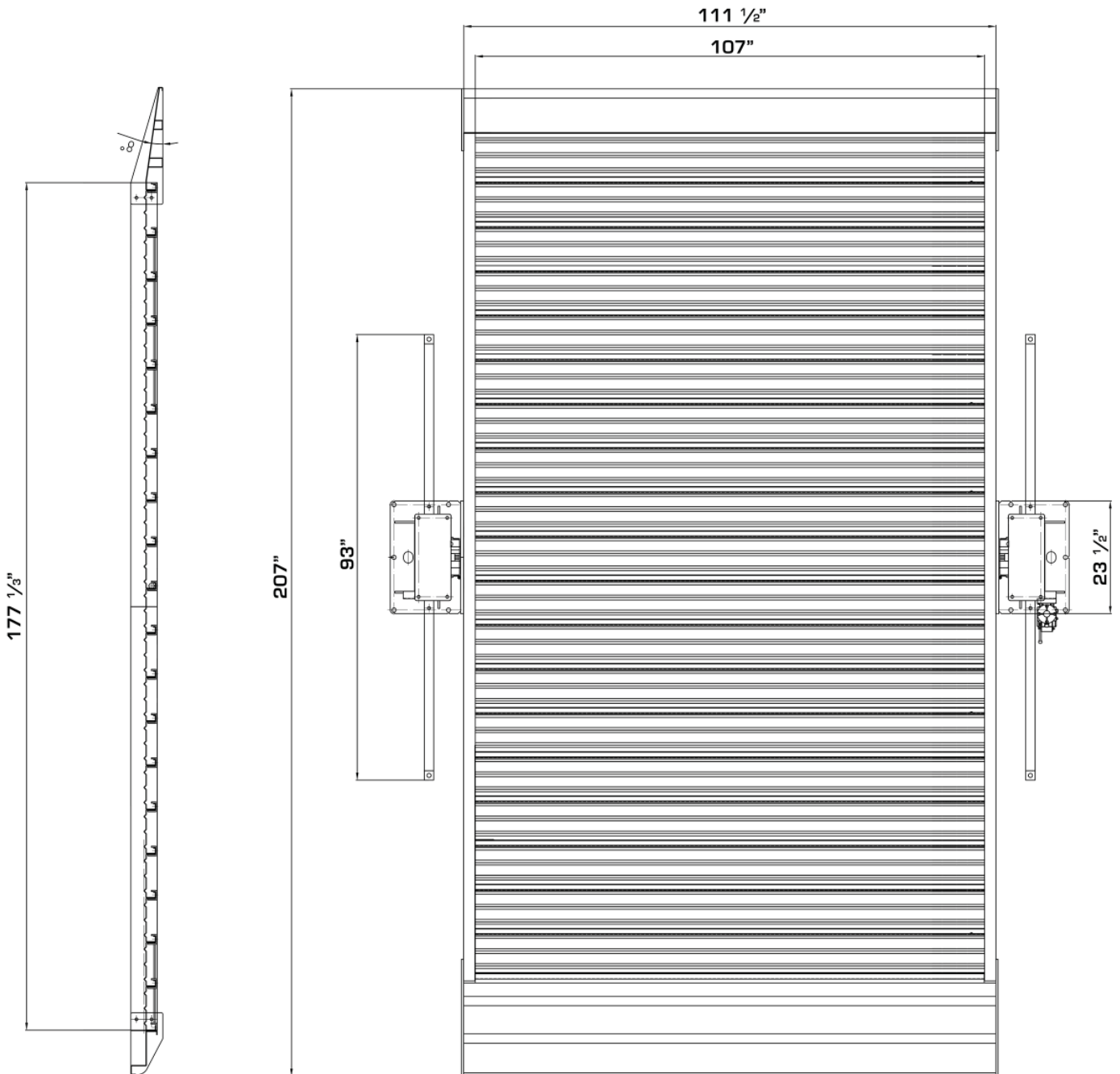
Floorplate Chain-Drive Model Features

Model SP-8000

- Compact design
- Segmented Galvanized Steel Platform
- Stores Cars, Boats, ATVs, Or Just About Anything Else
- Dual hydraulic cylinders designed and made on ANSI standards, utilizing NOK oil seals in cylinders
- Self-lubricating UHMW Polyethylene sliders and bronze bushings
- Single-point safety release, and dual lock safety system

Model	Style	Lifting Capacity	Lifting Height	Overall Height	Overall Width	Width Between Columns	Platform Drive Thru	Total Platform Length
SP-8000	Floor plate, Chain-driven	8,000lbs	74 3/4"	110 1/2"	142"	116 3/4"	107"	207"





Installation Requirements

Tools Required

Rotary Hammer Drill (3/4in /19mm)



Carpenter's Chalk



Hammer



Screw Drivers



Level Bar



Tape Measure (25ft)



Crescent Wrench (12")



Pliers



Ratchet Spanner With Socket (28#)



Vise Grips



Wrench set
(10#, 13#, 14#, 15#, 17#, 19#, 24#, 27#)



Ratchet Strap

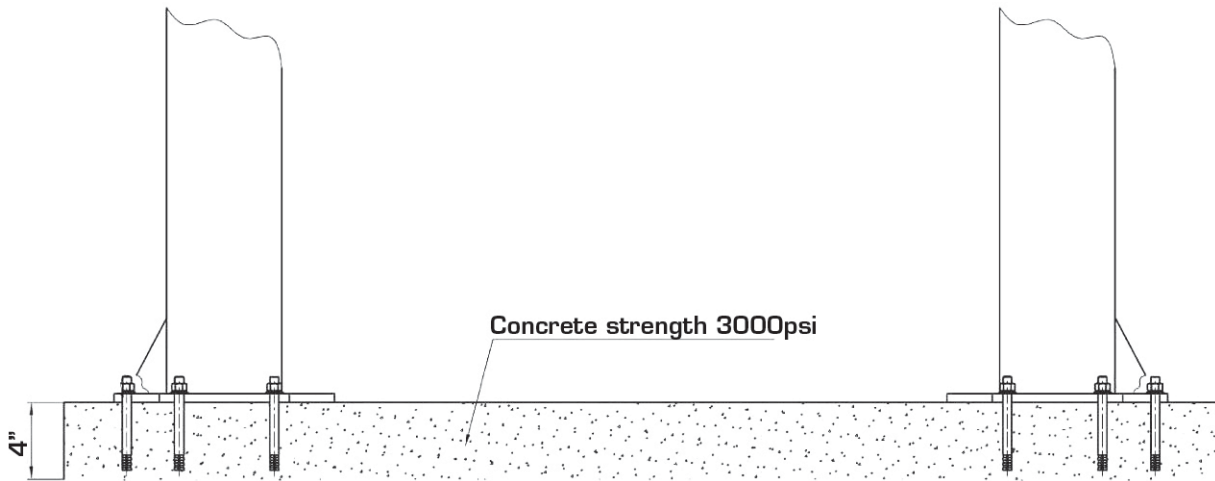


Concrete Specifications

Concrete must be in compliance to the specifications below.

Failure To Do So May Result In Personal Injury or Property Damage.

1. Concrete must have a thickness of 4 inches minimum and without reinforcing steel bars, and must be completely cured before the lift installation.
2. Concrete must be in good condition and must have a test strength 3,000 psi (210kg/cm²) minimum.
3. ***Floors must be level and no cracks.***



Power Supply

Power supply is 220v single phase service. A 30 amp breaker is required. The electrical wire must be a minimum of 10 gauge.

3. Move the lift aside with fork lift or hoist, open the outer packing carefully, take off the parts from upper and inside the column, take out the parts box, and check the parts according to the shipment parts list (**See Fig. 2**).



Fig. 2

4. Loosen the screws of the upper package stand, take off the upper column and remove the package stand. Move aside the parts and check the parts according to the shipment parts list.



Fig. 3

5. Position the columns up to each end of the base plate. Double check that the columns are positioned on the chalk line. Check the columns are plumb with level bar, and adjusting with the shims if the columns are not vertical.



Fig. 4

6. Lift the carriages up by hand and rest them on the first set of locks.

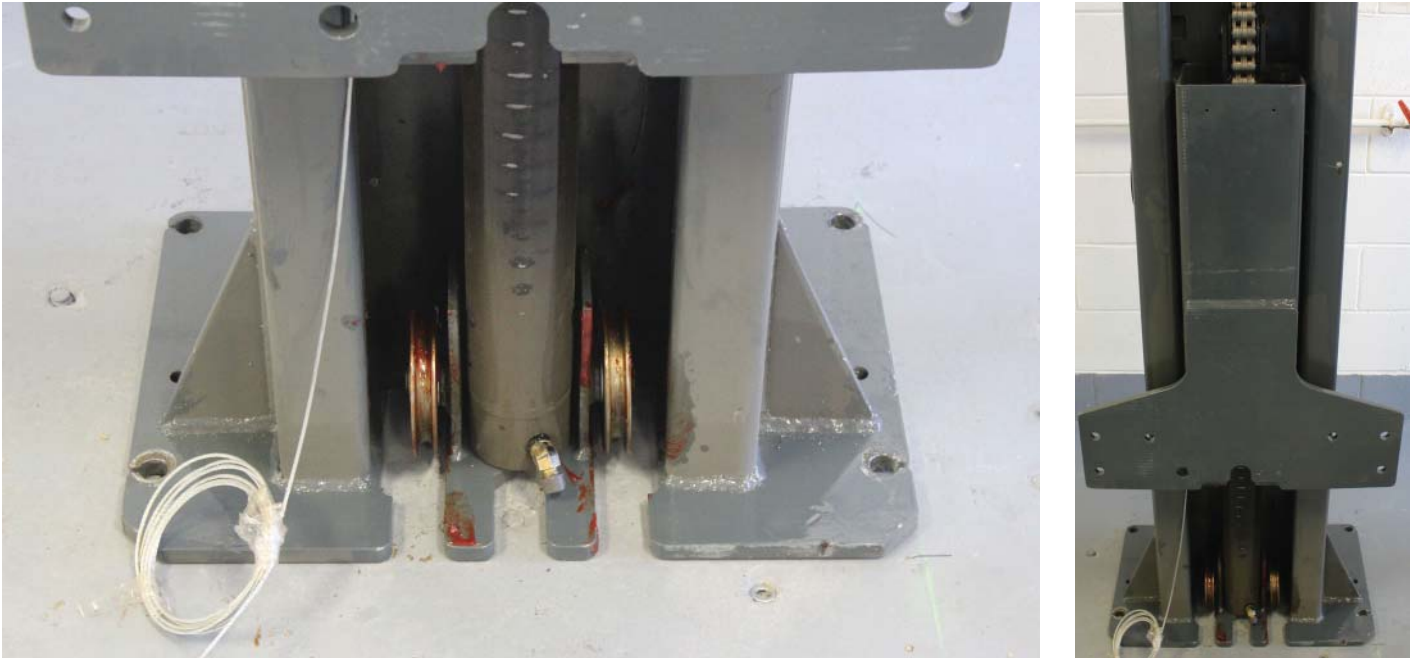


Fig. 5

7. Position rear cross beam weldment



Fig. 6

8. Insert the bolts that connect the rear cross beam weldment to the column but do not tighten them yet.



Fig. 7

- Slide the front cross beam weldment into the rear cross beam weldment and insert stability pin and the bolts.

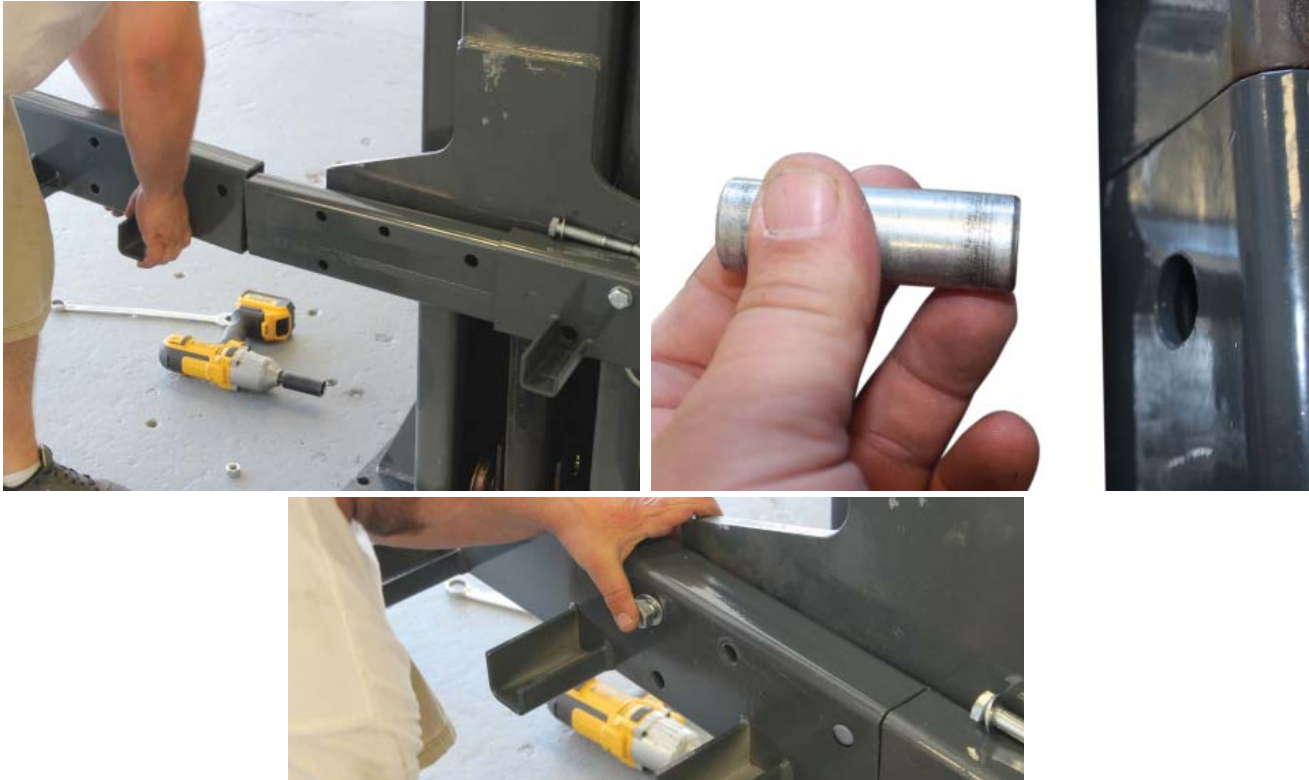


Fig. 8

- Ensure the beams are level. Then tighten all of the bolts.



Fig. 9

11. Repeat the process for the other column



Fig. 10

12. Install the top plate onto the top of the columns.

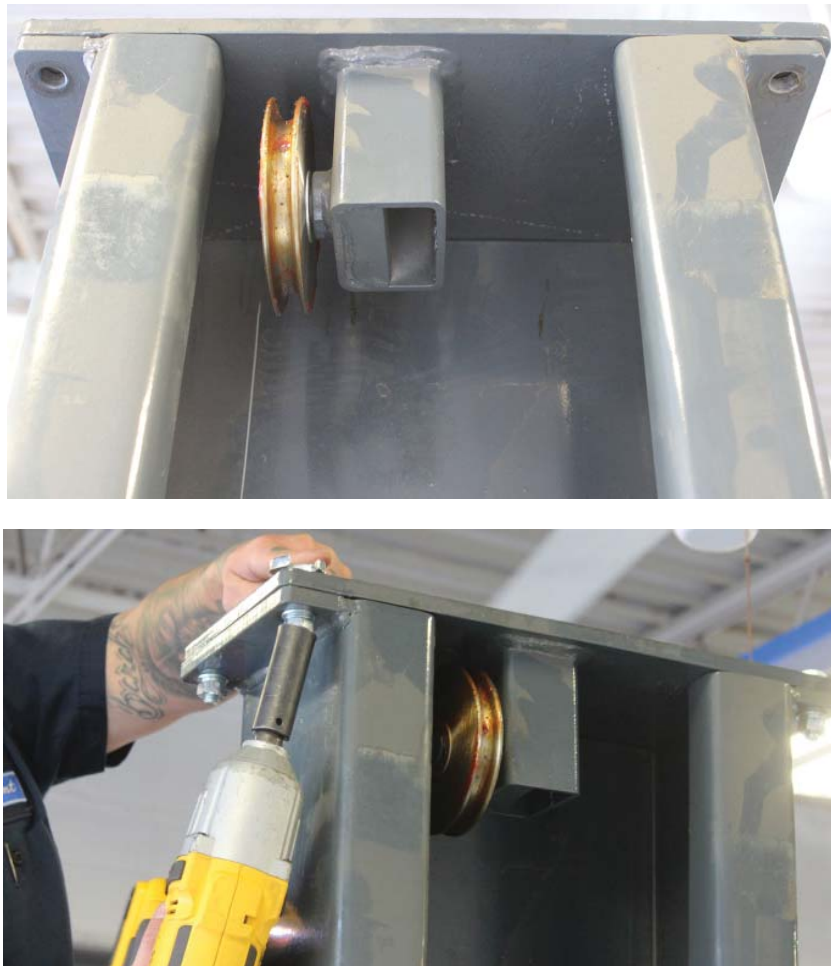
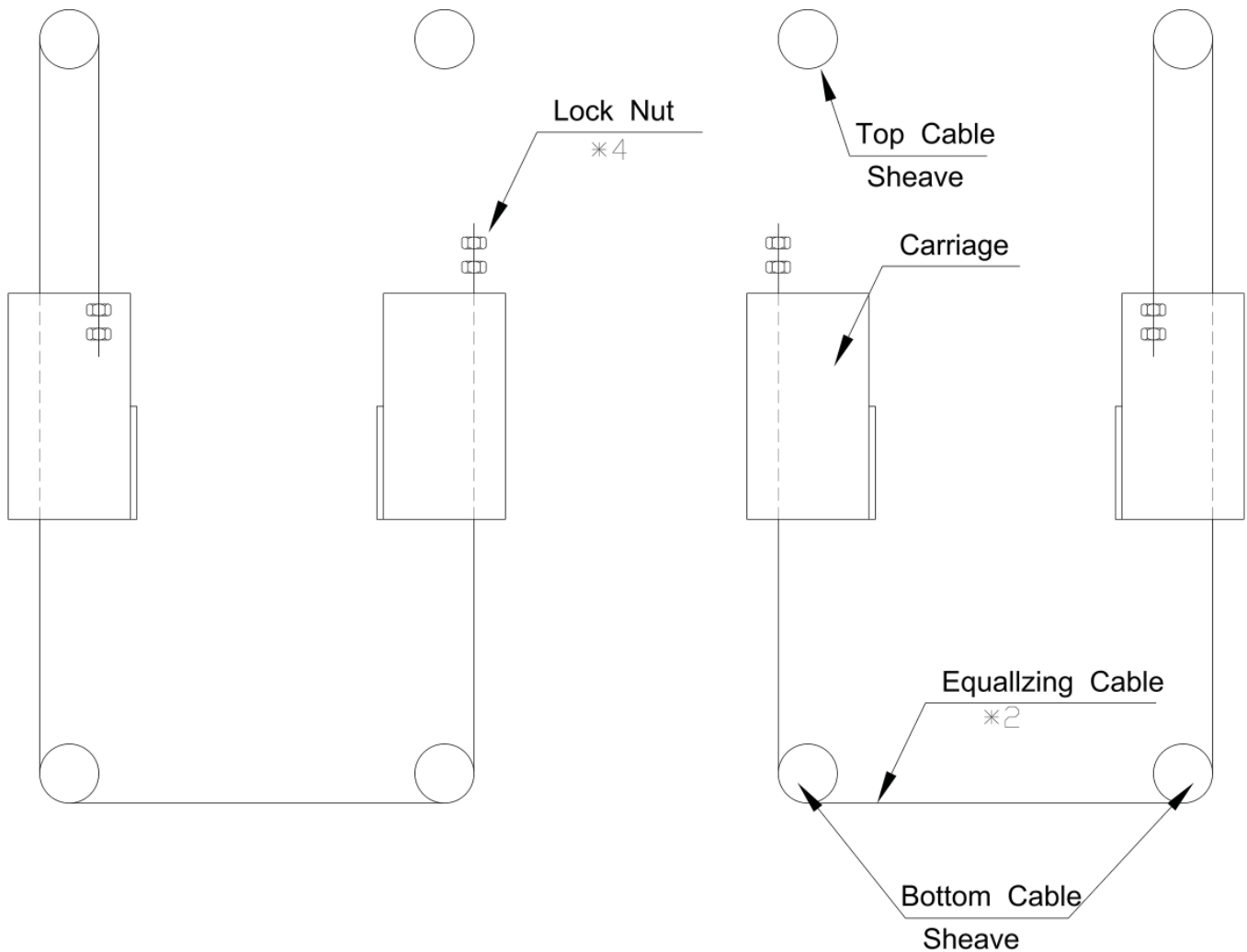


Fig. 11

13. Installing the equalizing cables for general cable arrangement. Route the first cable as shown on below. Tighten nut on one cable stud so that the end of stud passes the nylon on the nut. Pull the other end of cable and run nut on it. Repeat above for second cable.

NOTE: DO NOT tighten cables at this time. Just start them on the threads. Other column will be anchored in later steps. If you tighten cables at this time you will pull the column and be unable to properly level/shim it for anchor installation.

Cable Installation



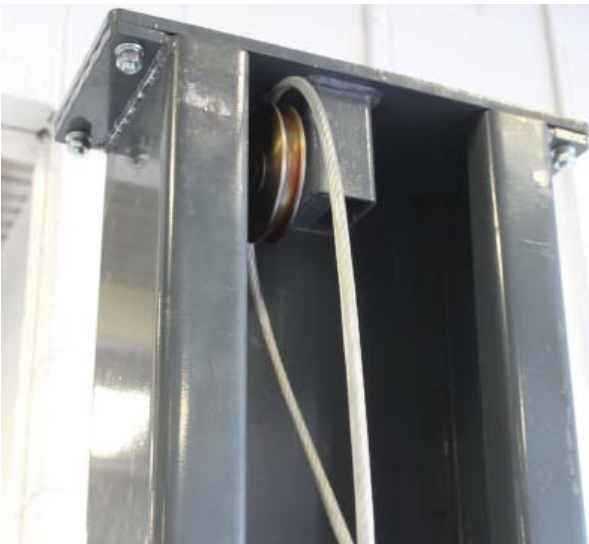


Fig. 12

14. Cylinder centering and chain installation: Make sure the “Tip” on the bottom of the cylinder is properly located into the center hole on top of the cylinder mount in base. Pull the pre-attached leaf chain in both sides up and over the chain sheave on top of the cylinders.

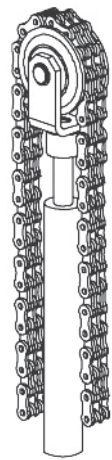


Fig. 13

15. Connect the Hydraulic Hoses and Fittings, as shown.

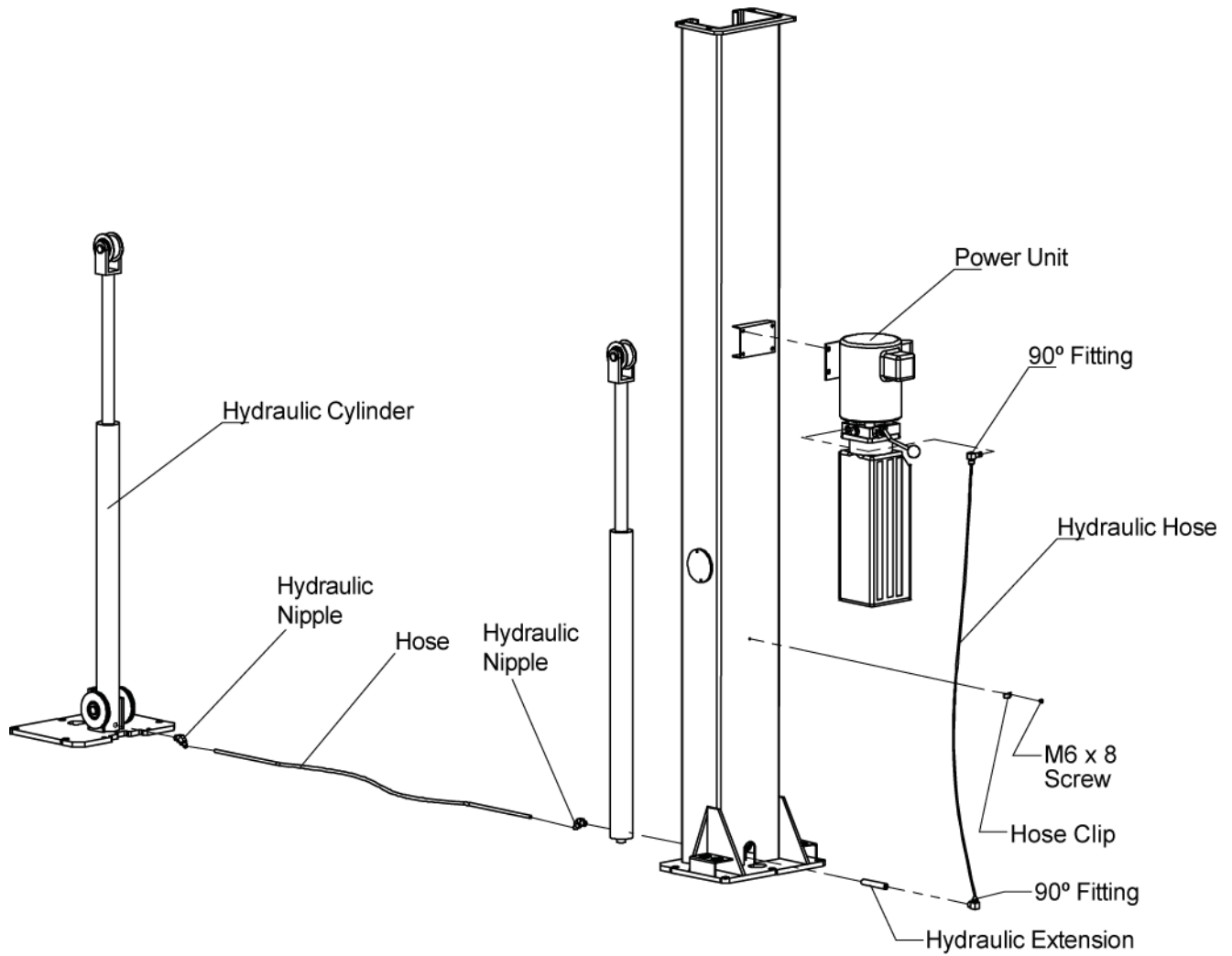


Fig. 14

16. Install power unit on the motor mount bracket, and 90 degree fitting for the hydraulic hose.

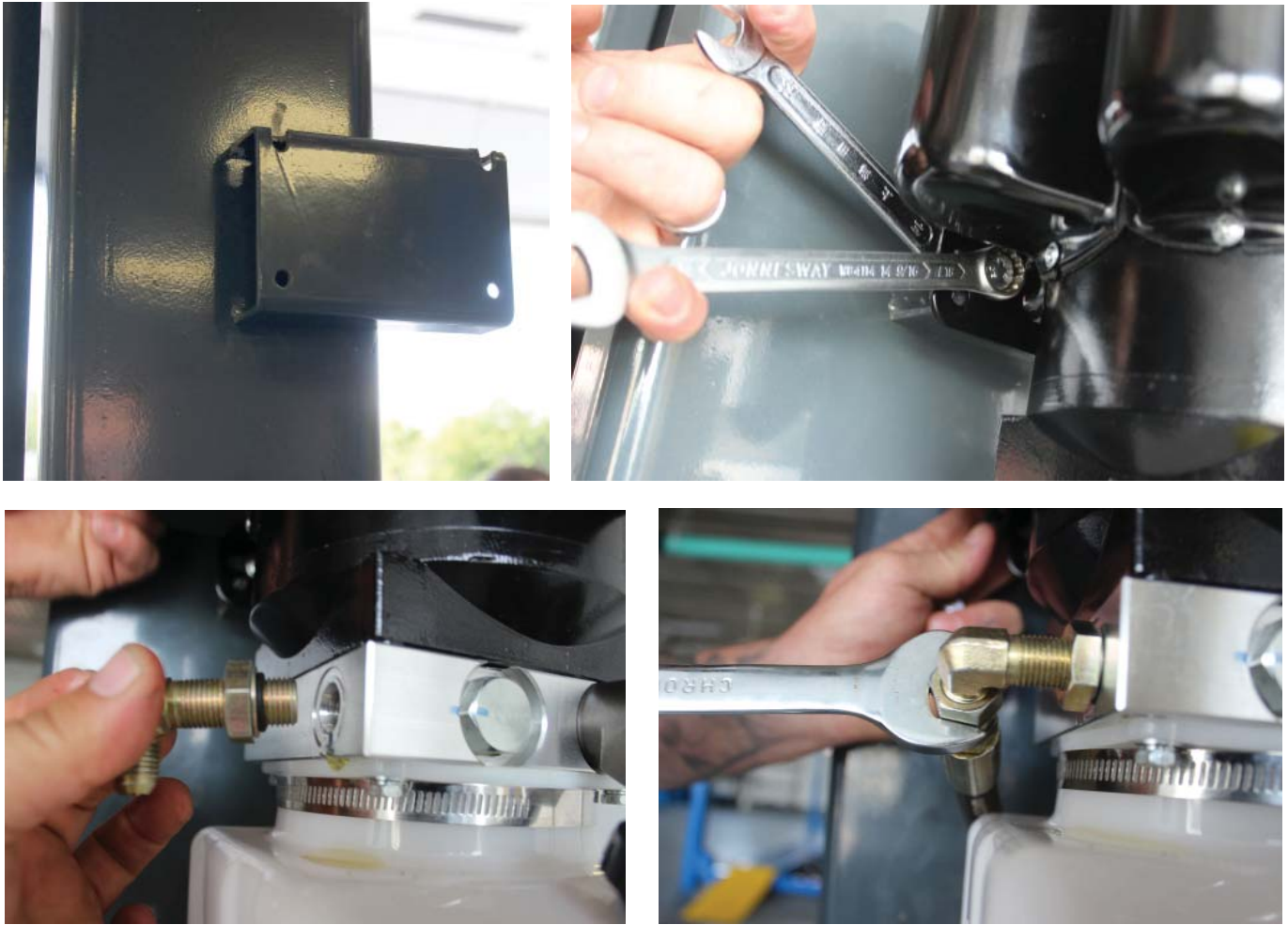


Fig. 15

17. After connecting all hoses, make sure all hydraulic fittings are tight and secure to prevent any leaks.

18. Bolt the wheel stop (beam weldment) to the crossbeams and start installing the galvanized steel plates.

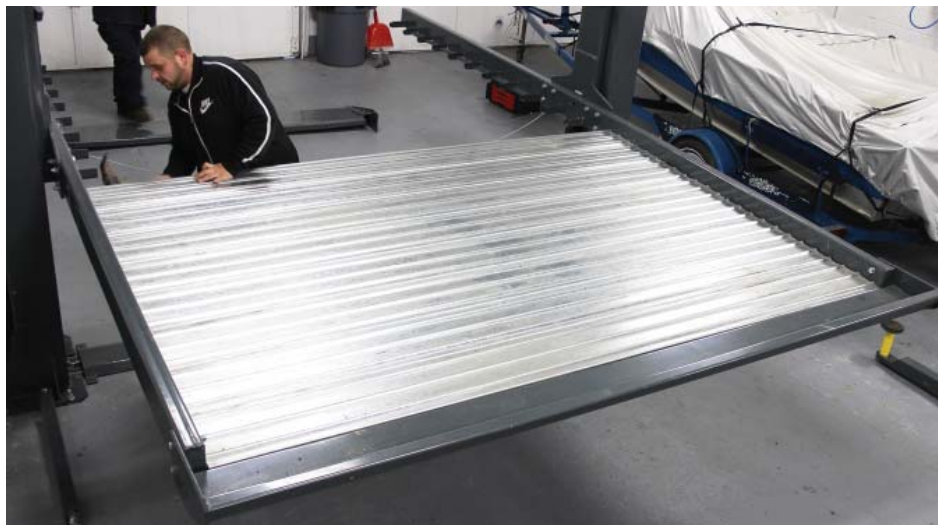


Fig. 16

19. Place the support beams as indicated in the parts illustration.



Fig. 17

Note: If there is significant space between the steel plates and the crossbeams, you may have to use a ratchet strap to close the gap and to attach the ramp.

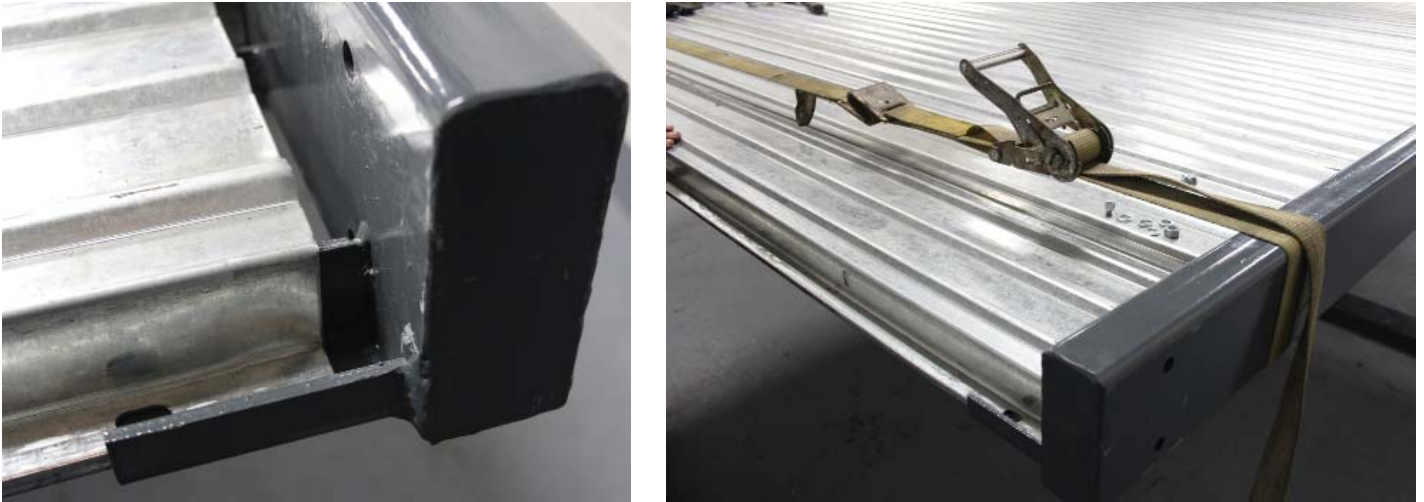


Fig. 18

20. Bolt the last steel segment into place.



Fig. 19

21. Install the ramp.



Fig. 20

22. Double check that everything is plumb with a level and the lift is on the chalk lines. Adjust with shims if the columns are not vertical.

23. Bolt the galvanized steel plates together and to the cross beams



Fig. 21

24. Place floorplate into position before drilling anchor bolt holes.



Fig. 22

25. Prepare anchor bolts

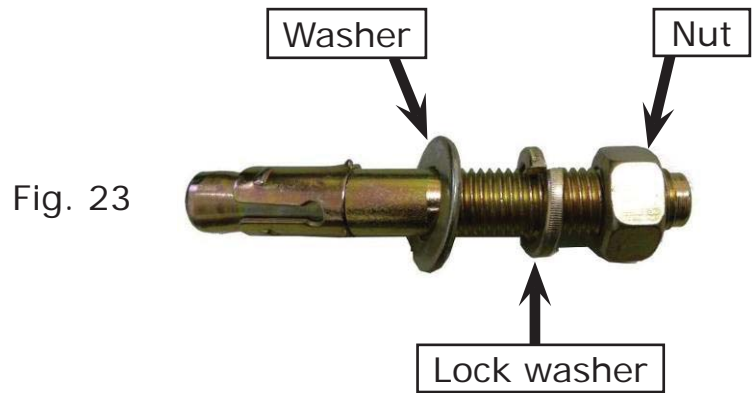


Fig. 23

26. Use a hammer drill with a 3/4" (19mm) masonry bit and drill all the anchor holes. Install the anchor bolts with a hammer. Tighten the Anchor Bolts between 85 and 110 foot pounds

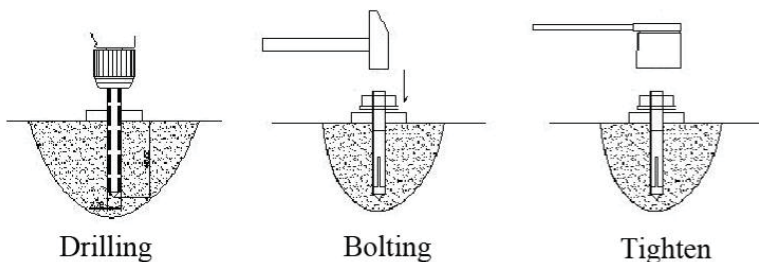


Fig. 24

27. Raise the lift to chest level. Route the lock release wire.



Fig. 25

28. Slide wire through cable ferrule and into protective plastic cover. Loop wire back into the cable ferrule and then crimp it.

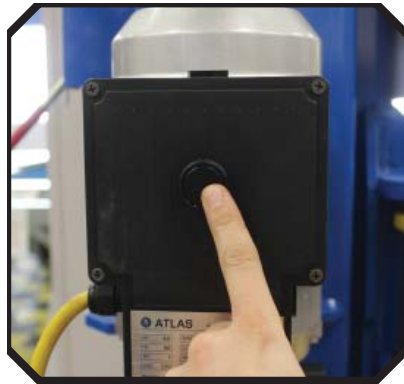


Fig. 26

Bleeding Procedure

Immediately after installation, perform this procedure to remove air from the chain-over-roller hydraulic system.

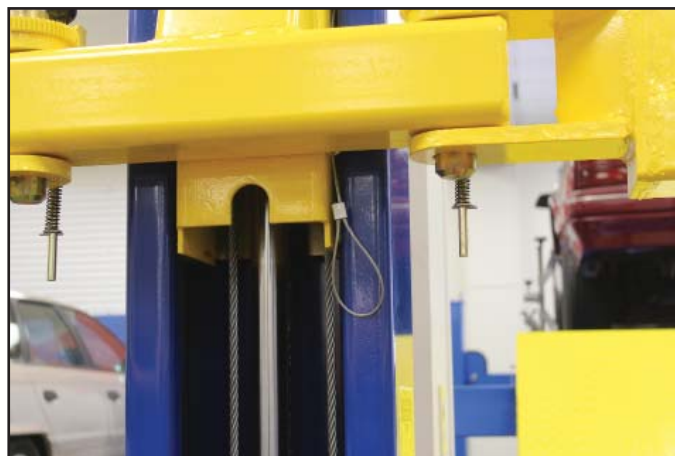
Press the UP Button to raise the Carriages (part to which the arms attach inside both Columns) about 18" off the floor. DO NOT RAISE THE CARRIAGES TO MAXIMUM HEIGHT, JUST ENOUGH TO REMOVE ANY SLACK FROM THE CHAIN.



Disengage the Safety Locks on both Columns using the Single Point Release Handle near the power unit or by pulling the two Manual Release Cables located on each carriage (depending on model of 2 Post Lift you have). Depress the Lowering Valve handle and lower the arms completely to the floor. Once the lift arms are resting on the ground maintain pressure on the lowering valve handle for several seconds more.



Single Point Release Handle



Manual Release Cable



Lowering Valve

Using a bungee cord or someone's help depress and secure the Lowering Valve handle. Go to each cylinder and confirm that the silver ram is completely retracted into the black outer sleeve. If it is not, then pull the chain or push down on the pulley in order to fully collapse the cylinder.



At this point any air should be gone from the lift hydraulic system, if not, repeat the above steps 1 through 3.

After doing this procedure the lift arms should travel up and down smoothly and at a consistent speed during operation.

Operation Instructions

Please read the safety tips carefully before operating the lift

To lift vehicle

1. Keep lift area clear of clutter;
2. Position lift arms to the lowest position;
3. Push lift arms all the way in;
4. Open lift arms;
5. Position vehicle between columns;
6. Move arms to the vehicle's lifting point;

Note: The four lift arms must make contact on the lifting points of the vehicle.

7. Press the **UP** button until the lift pads contact underside of vehicle totally. Recheck to make sure vehicle is secure, centered, and not off balance;
8. Continue to raise the lift slowly to the desired working height, ensuring the balance of vehicle;
9. Push lowering handle to lower lift onto the nearest safety. The vehicle is ready to repair.

To lower vehicle

1. Keep the lift area free of clutter
2. Press the **UP** button to raise the vehicle slightly. Then release the safety lock device, lower the vehicle by pushing down the lowering handle while holding down the safety lock handle.
3. Open the arms and position them to the shortest length;
4. Drive the vehicle away.
5. Turn off the power.

Maintenance Schedule

Monthly:

1. Re-torque the anchor bolts to 80-117 foot lbs.;
2. Check all connectors, bolts and pins to insure proper mounting;
3. Lubricate cable with lubricant;
4. Make a visual inspection of all hydraulic hoses/lines for possible wear or leakage;
5. Check Safety device and make sure it is working properly;
6. Lubricate all Rollers and Pins with 90wt. Gear oil or equivalent;
7. Lubricate all 4 corners of the inside of the column as needed with White Lithium or something similar. This provides good coverage and saves the life of the wear blocks and keeps carriage true to column)

Note: All anchor bolts should take full torque. If any of the bolts do not function for any reason, DO NOT use the lift until the bolt has been replaced.

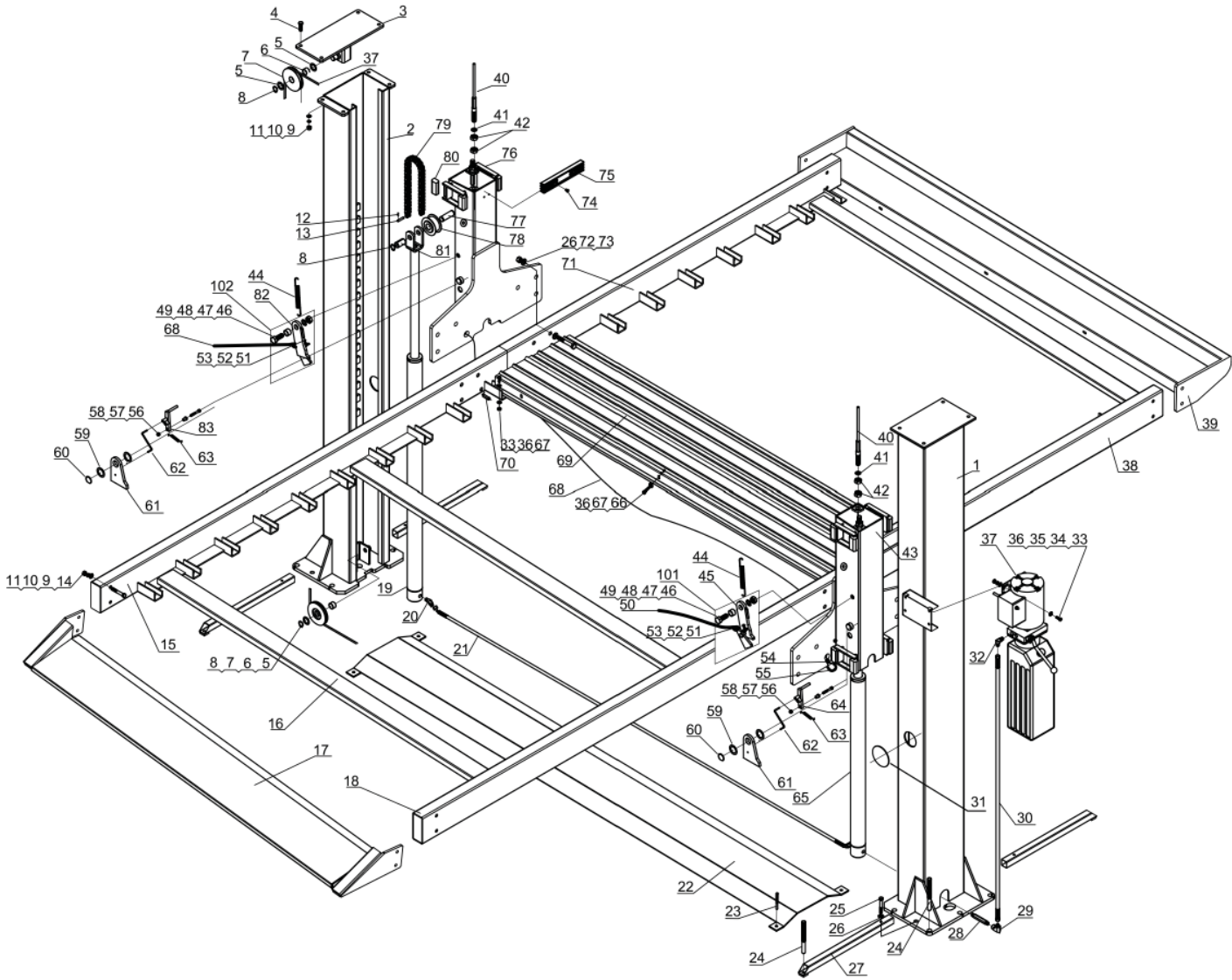
Every six months:

1. Make a visual inspection of all moving parts for possible wear, interference or damage.
2. Check and adjust as necessary the equalizing tension of the cables to insure level lifting.
3. Check columns for plumb.
4. Check Rubber Pads and replace as necessary.
5. Check Safety locks for proper operation.

Troubleshooting

TROUBLE	CAUSE	REMEDY
Motor does not run	<ol style="list-style-type: none"> 1. Button does not work 2. Wiring connections are not in good condition 3. Motor burned out 4. AC contactor burned out 	<ol style="list-style-type: none"> 1. Replace button 2. Repair all wiring connections 3. Repair or replace motor 4. Repair or replace
Motor runs but the lift is not raised	<ol style="list-style-type: none"> 1. Motor runs in reverse rotation 2. Gear pump out of operation 3. Release valve in damage 4. Relief valve or check valve in damage 5. Low oil level 	<ol style="list-style-type: none"> 1. Reverse two power wire 2. Repair or replace 3. Repair or replace 4. Repair or replace 5. Fill tank
Lift does not stay up	<ol style="list-style-type: none"> 1. Release valve out of work 2. Relief valve or check Valve leakage 3. Cylinder or fittings leak 	Repair or replace
Lift raises slowly	<ol style="list-style-type: none"> 1. Oil line is jammed 2. Motor running on low voltage 3. Oil mixed with air 4. Gear Pump leaks 5. Overload lifting 	<ol style="list-style-type: none"> 1. Clean the oil line 2. Check electrical system 3. Fill tank 4. Replace pump 5. Check load
Lift cannot lower	<ol style="list-style-type: none"> 1. Safety device is in active. 2. Release valve is damaged 3. Safety cable broken 4. Oil system is jammed 	<ol style="list-style-type: none"> 1. Release the safeties 2. Repair or replace 3. Replace 4. Clean the oil system

Parts Illustration



Parts List

Item	Part Number	Description	QTY	Remark
1	CT35-210-00	The main column weldment	1	
2	CT35-230-00	Deputy column weldment	1	
3	QL4B-500-00	Top cover weldment	2	
4	GB5782-86	Hexagon bolt M12*45	8	Galvanized
5	QL40-200-04	Pulley washer	12	Galvanized
6	QL40-700-02	Pulley bush	6	
7	QL40-700-01	Pulley	6	Zine Plating-yellow
8	GB894.1-86	Jump ring 25	10	Black coating
9	GB6170-86	Hexagon nut M12	16	Galvanized
10	GB93-87	Spring washer 12	16	Black coating
11	GB97.1-85	Flat washer 12	16	Galvanized
12	GB91-86	Cotter 2*20	8	Galvanized
13	QL60-000-01	Chain pin	4	Black coating
14	GB5782-86	Hexagon bolt 12*100	8	Galvanized
15	CT35-410-L0	Front cross beam weldment	1	
16	CT35-440-00	To strengthen beam weldment	3	
17	CT35-450-00	Ramp weldment	1	
18	CT35-410-R0	Front cross beam weldment	1	
19	CT35-100-L0	Slave cylinder	1	
20	QL40-100-B61	45 degree fitting	2	Zine Plating-yellow
21	CT35-000-02	Hudraulic Hose	1	
22	CT35-500-00	Base plate	1	
23	QL4B-000-03	Anchor Bolt 10*70	4	
24	QL40-000-15	Anchor Bolt 18*140	14	
25	GB5782-86	Hexagon bolt 16*80	4	
26	GB97.1-85	Flat washer 16	28	

Item	Part Number	Description	QTY	Remark
27	CT35-130-00	Extend tube weldment	4	
28	QL40-000-B10	Fitting with explosion valve	1	Zine Plating-yellow
29	QL40-000-09	Fitting	1	Zine Plating-yellow
30	CT35-000-01	Hydraulic Hose	1	
31	QL4T-1L0-01	Winder cover	2	
32	QL40-000-07	90 degree fitting	1	Zine Plating-yellow
33	GB5782-86	Hexagon bolt M8*25	44	Galvanized
34	GB93-87	Spring washer 8	4	Black coating
35	GB97.1-85	Flat washer 8	8	Galvanized
36	GB6170-86	Hexagon nut M8	104	Galvanized
37	QL40-000-06	Power unit	1	
38	CT35-420-R0	Rear cross beam weldment	1	
39	CT35-430-00	Beam weldment	1	
40	CT35-600-00	Cable	2	
41	GB97.1-85	Flat washer 20	4	Galvanized
42	GB6170-86	Hexagon nut M20	8	Galvanized
43	CT35-310-00	Right carriage	1	
44	QL40-500-02	Spring	2	
45	QL40-521-00	Latch weltment	1	
46	GB5783-86	Hexagon bolt M20*50	2	8.8 stage (Black coating)
47	QL40-500-03	Bush	2	Black coating
48	GB93-85	Spring washer 20	4	Black coating
49	GB6170-86	Hexagon nut M20	2	8.8 stage (Black coating)
50		Latch cable	1	
51	GB818-85	Bolt M6*35	2	Galvanized
52	GB97.1-85	Flat washer 6	2	Galvanized
53	QL40-520-01	Spring	2	Black coating
54	QL40-500-05	Small cable aluminum clamp	1	Galvanized
55		Plastic cover	1	
56	GB70-85	Bolt M8*55	2	

Item	Part Number	Description	QTY	Remark
57	QL4F-200-05	Limit sleeve	2	Galvanized
58	GB889-86	Lock nut M8	2	Galvanized
59	QL4F-200-02	Washer	4	Galvanized
60	GB894.1-86	Jump ring 34	2	Black coating
61	QL4F-200-01	Chain Latch	2	
62	QL4F-200-03	Chain latch rod	2	Black coating
63	QL4F-200-04	Spring	2	Black coating
64	QL4F-220-00	Chain hook bracket	1	
65	CT35-100-R0	The main cylinder	1	
66	GB5782-86	Hexagon bolt 8*16	60	
67	GB95-85	Big flat washer 8	200	
68		Small cable 3*3200	1	
69	CT35-400-01		19	Galvanized
70	CT35-400-02	Pin	2	Galvanized
71	CT35-420-L0	Rear cross beam weldment	1	
72	GB5782-86	Hexagon bolt 16*100	12	
73	GB6182-86	Lock nut 16	12	
74	GB818-85	Bolt M6*20	4	Galvanized
75	QL4W-000-04	Rubber protection bar	2	
76	CT35-330-00	Left carriage	1	
77	QL40-100-03	Chain wheel shaft	2	Galvanized
78	QL60-100-01	Chain wheel	2	Galvanized
79	CT35-200-01	Chain	2	
80	QL4B-300-01	Sliding block	16	
81	QL40-100-04	Composite bearing	2	
82	CT35-341-00	Left block weldment group	1	
83	CT35-350-00	Chain hook bracket	1	
101	QL40-520-00	Latch block components	1	
102	CT35-240-00	Left Latch block components	1	