

INSTALLATION & OPERATION MANUAL



Atlas MR-06 6,000 lb. Capacity Portable Mid Rise Lift



Atlas Automotive Equipment
www.atlasautoequipment.com
(866) 898-2604

Read this entire manual before operation begins.

Record below the following information which is located on the serial number data plate.

Serial No. _____

Model No. _____

Date of Installation _____

———— Contents ————

Specifications	4
Installation Requirement	5
Steps Of Installation	6
Exploded View	13
Operation Instructions.	16
Maintenance Schedule.	17
Trouble Shooting	18
Parts List	19
Warranty	23



Specifications

- Automatic safety lock: 3 position safety locks, mechanical safety locks release, No need of air source.
- High speed: From 0-1090mm (43") in just 21 seconds
- Portable design: It is easy to move the unit with the power unit stand
- Adjustable rubber pad included

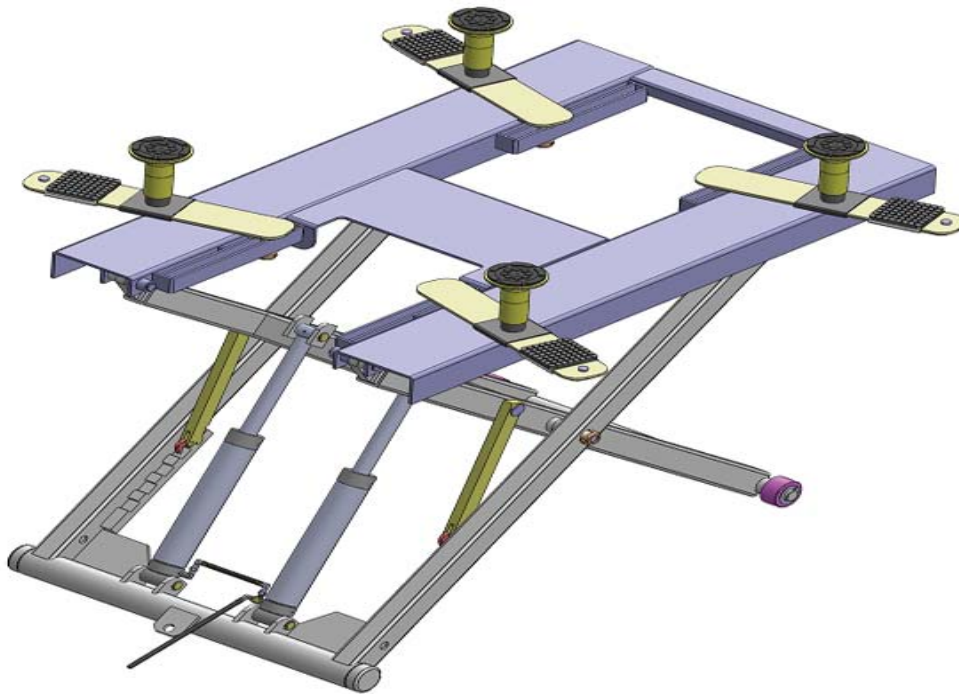


Fig. 1

Lifting Capacity	Raised Height	Lifting Time	Overall Length	Platform Width	Swing Width	Lowered Height	Gross Weight	Motor
2.8T 6,000 lbs	1090mm 43"	21S	1885mm 74 1/4	1000mm 39 3/8"	1604mm 63 1/8"	125mm 5"	345Kg 761 lbs	1.5HP /110V

Installation Requirement

Tools Required

Screw Set 	English Spanner (12") 
Grease Gun 	Hook Spanner (40~42mm) 
Wrench sets (13#, 15#, 17#, 19#) 	Pliers 

Fig. 2

Concrete Specifications

Failure to follow concrete specifications may result in personal injury and the lift or vehicle falling.

1. Concrete must be a minimum of 4 inches and must be cured before lift installation.
2. Concrete must be in good condition and must have a test strength 3,500psi (250kg/cm²) minimum.
3. Floors must be level and no cracks.

Power Supply

The power unit must be 1.5 horsepower minimum. Electrical supply must consist of a 30AMP breaker minimum. Power supply comes with a 110 volt cord.

Steps Of Installation

A. Check the parts before assembly, make sure all the parts are completed.

1. Packaged lift, Parts box, Power Unit and Power Unit Stand. Move the parts aside, open the outer packing and check the parts according to the shipment list (See Fig. 3).

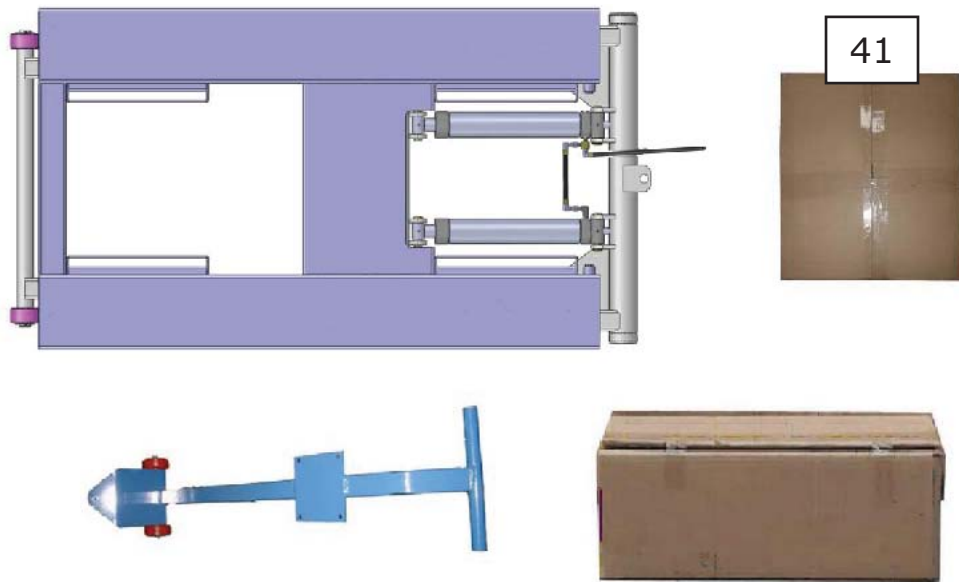


Fig. 3

2. Open the parts box, check the parts according to the parts box list (See Fig. 4).



Fig. 4

3. Open the parts bag, check the parts according to the parts bag list (See Fig. 5).



Fig. 5

B. Install hydraulic power unit and pressure compensation valve assembly (See Fig. 6).

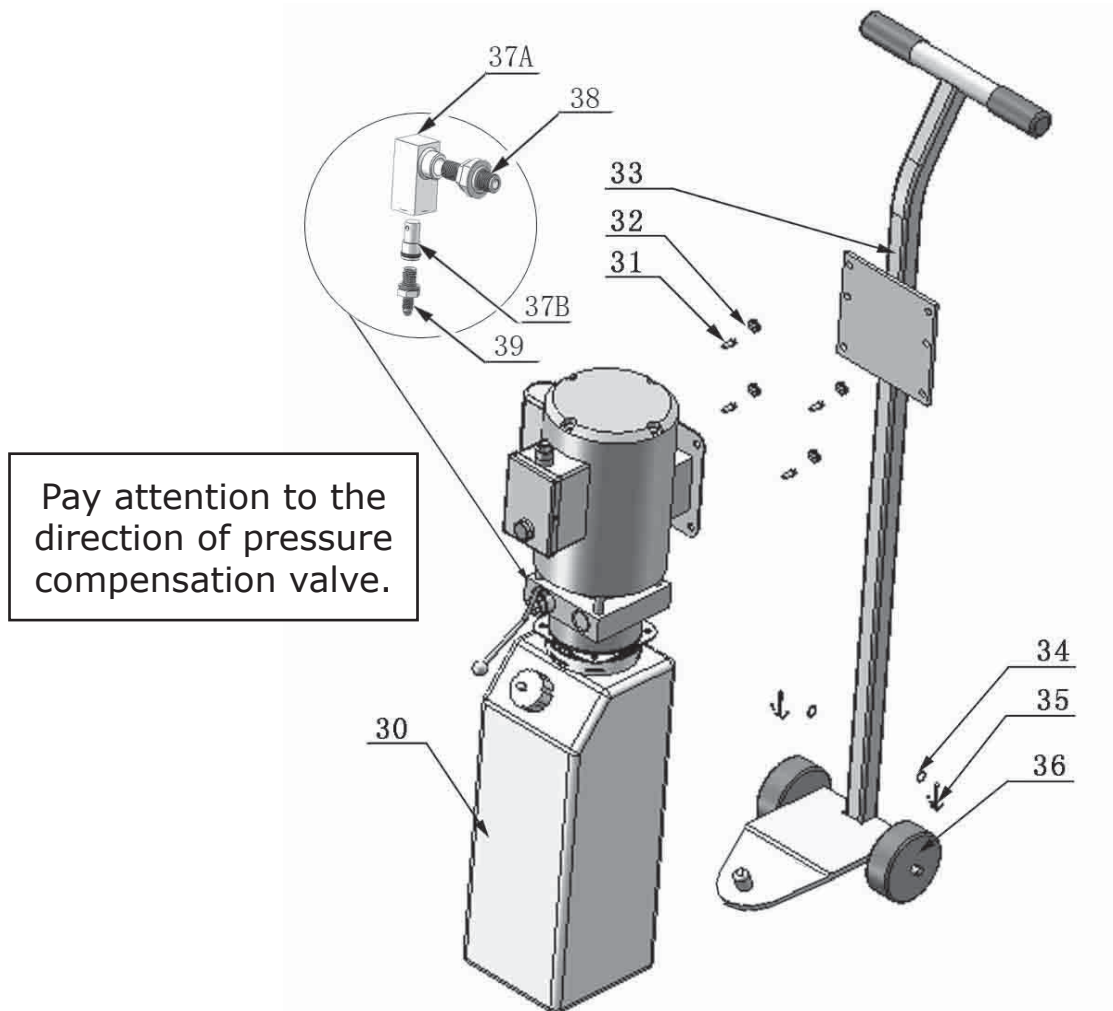


Fig. 6

C. Install oil hose assembly (See Fig. 7).

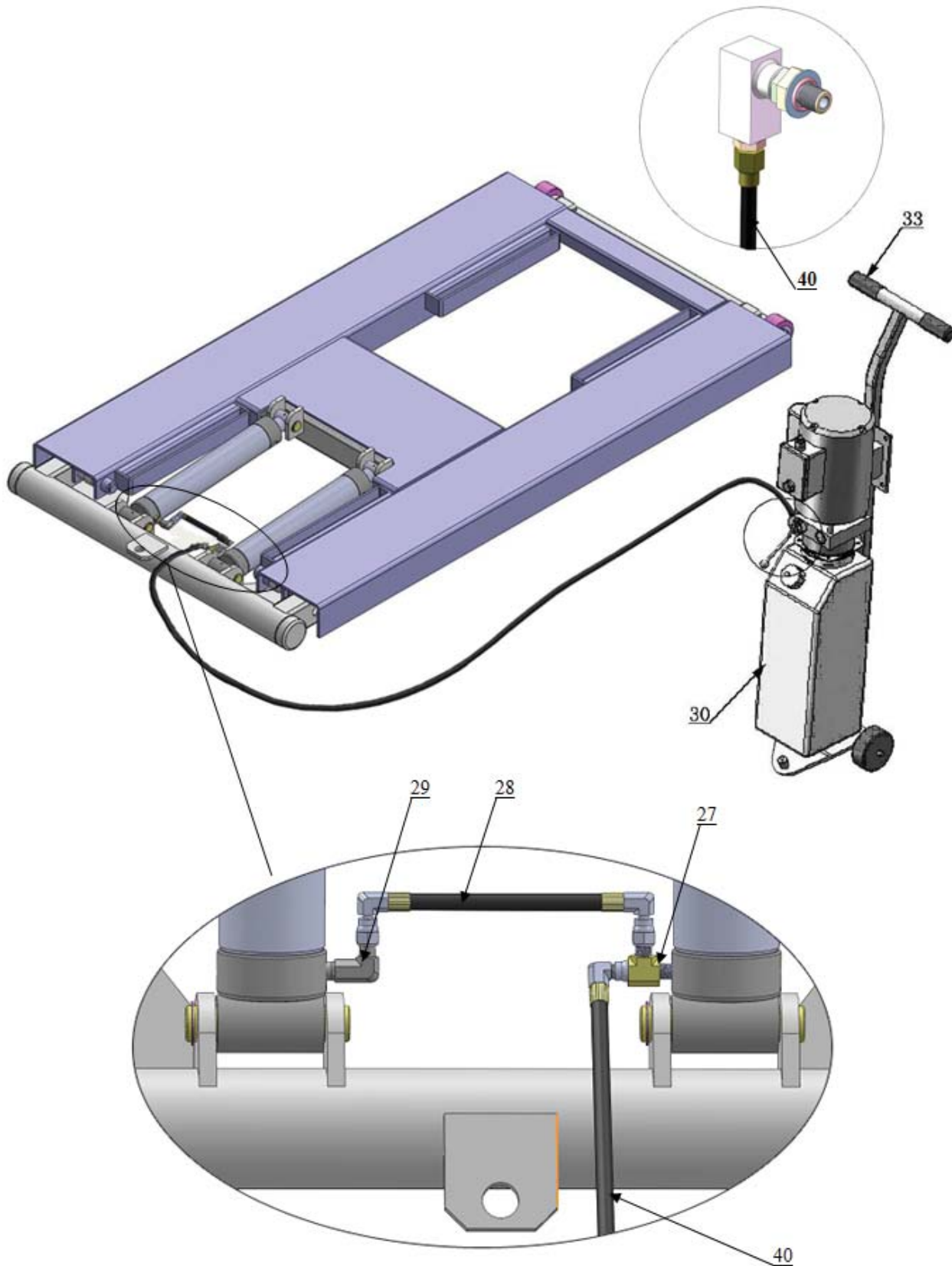


Fig. 7

D. Install supporting arm

1. Prepare the parts of supporting arms (See Fig. 8)



Fig. 8

2. Install supporting arms and rubber pads assembly (See Fig. 9)

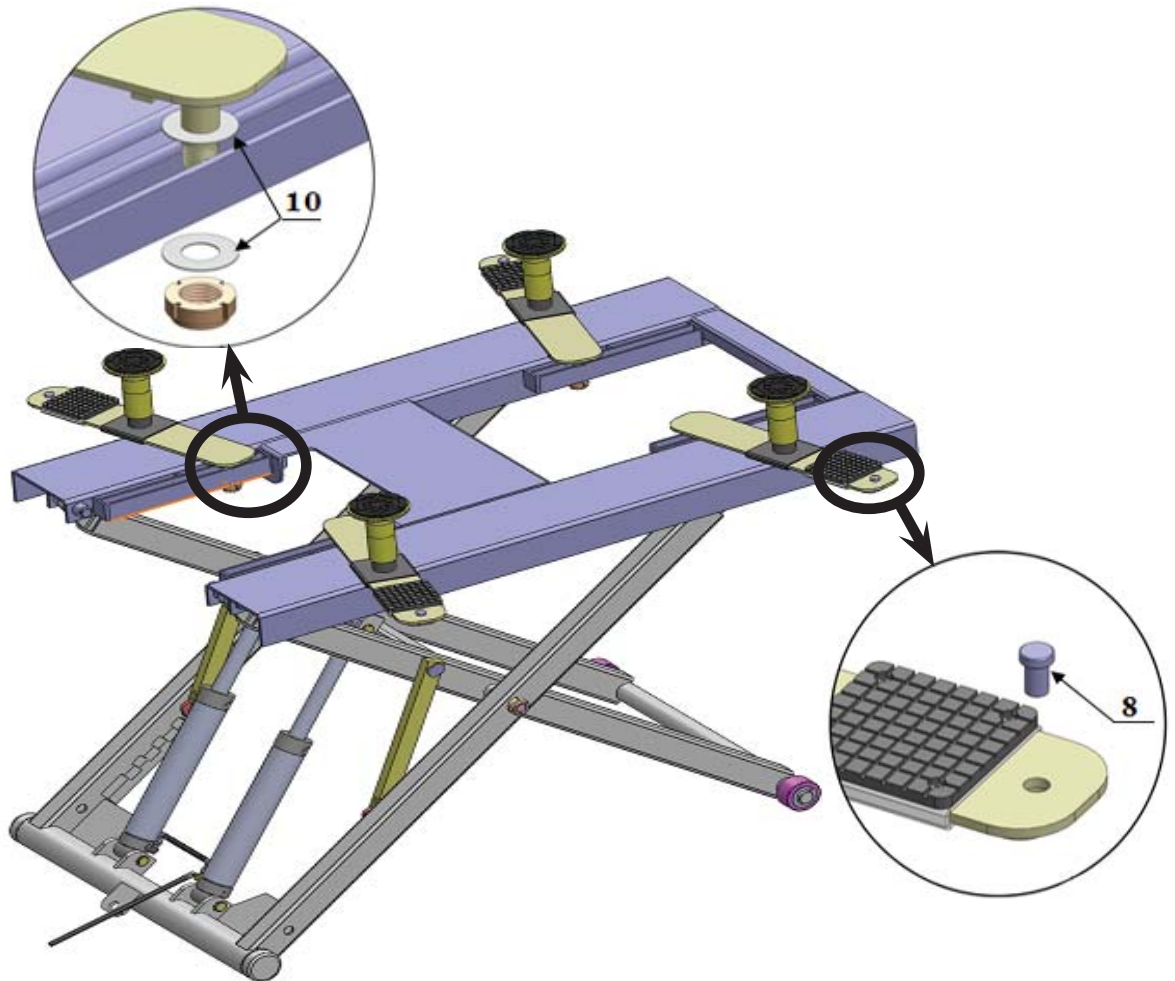


Fig. 9

E. Install electric system

Connect the power source on the data plate of Motor

Note:

1. **For the safety of operators, the power wiring must contact the floor well.**
2. **Pay attention to the direction of rotations when using three phase motors.**

Motor cable for Atlas Single phase power unit (See Fig. 10)

1. Connecting the two power supply lines (fire wire **L** and zero wire **N**) to terminals of AC contactor marked **L1, L2** respectively.
2. Connecting the two motor wires to terminals of AC contactor marked **T1, T2**.
3. Connecting **A2** of AC contactor to **L2** .
4. Two wires of control button connected with terminals of AC contactor marked **A1, L1**.

Atlas Single phase power unit

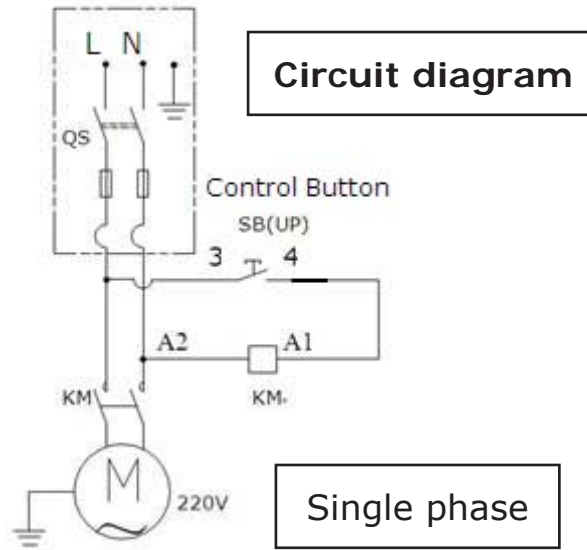
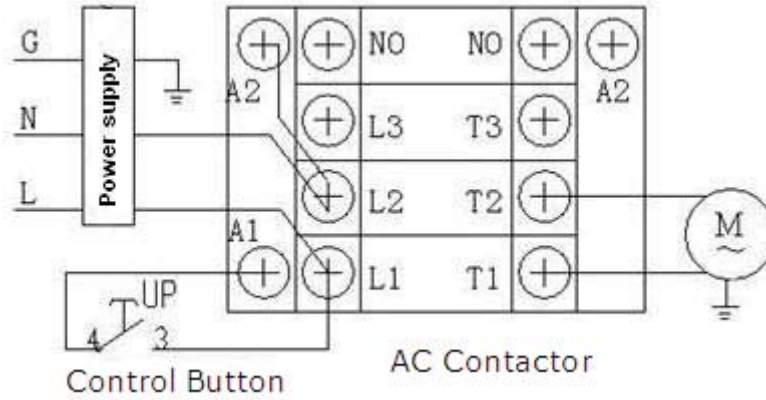
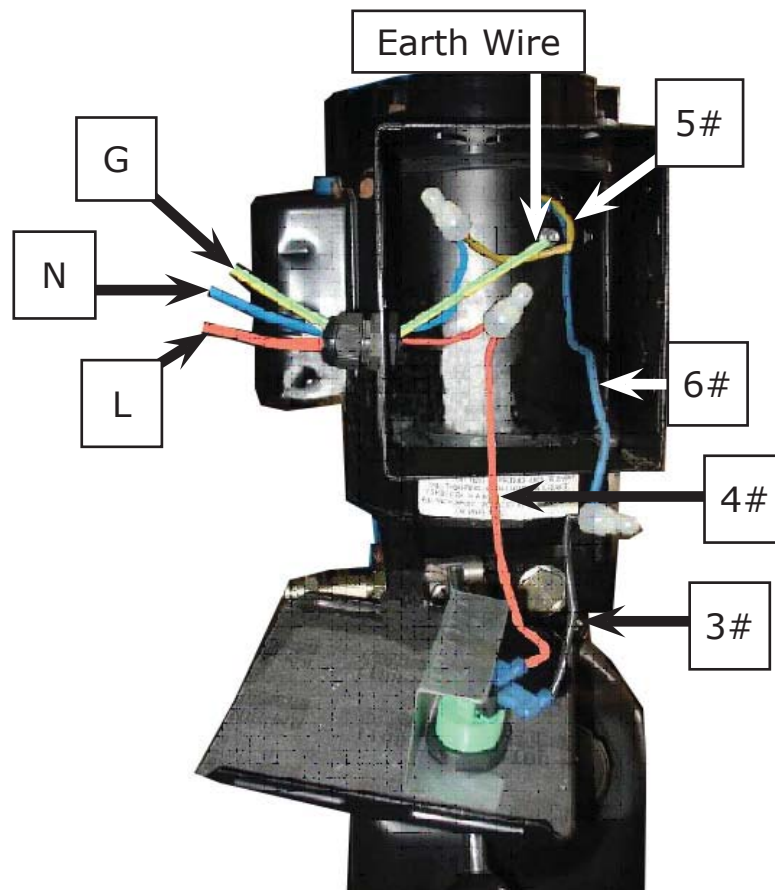
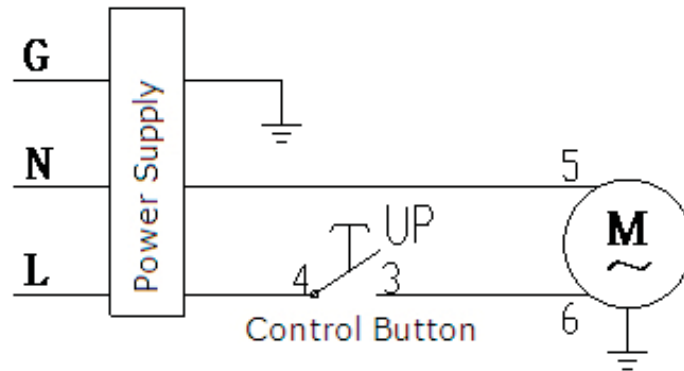


Fig. 10

Atlas Single phase motor (See Fig. 11)

1. Power supply wire (fire wire **L**) connected with **4#** wire of control button.
2. Wire **3#** of control button connected with wire **6#** of motor.
3. Power supply line (zero wire **N**) connected with wire **5#** of motor.



Motor of Atlas Single phase power unit

Fig. 11

Exploded View

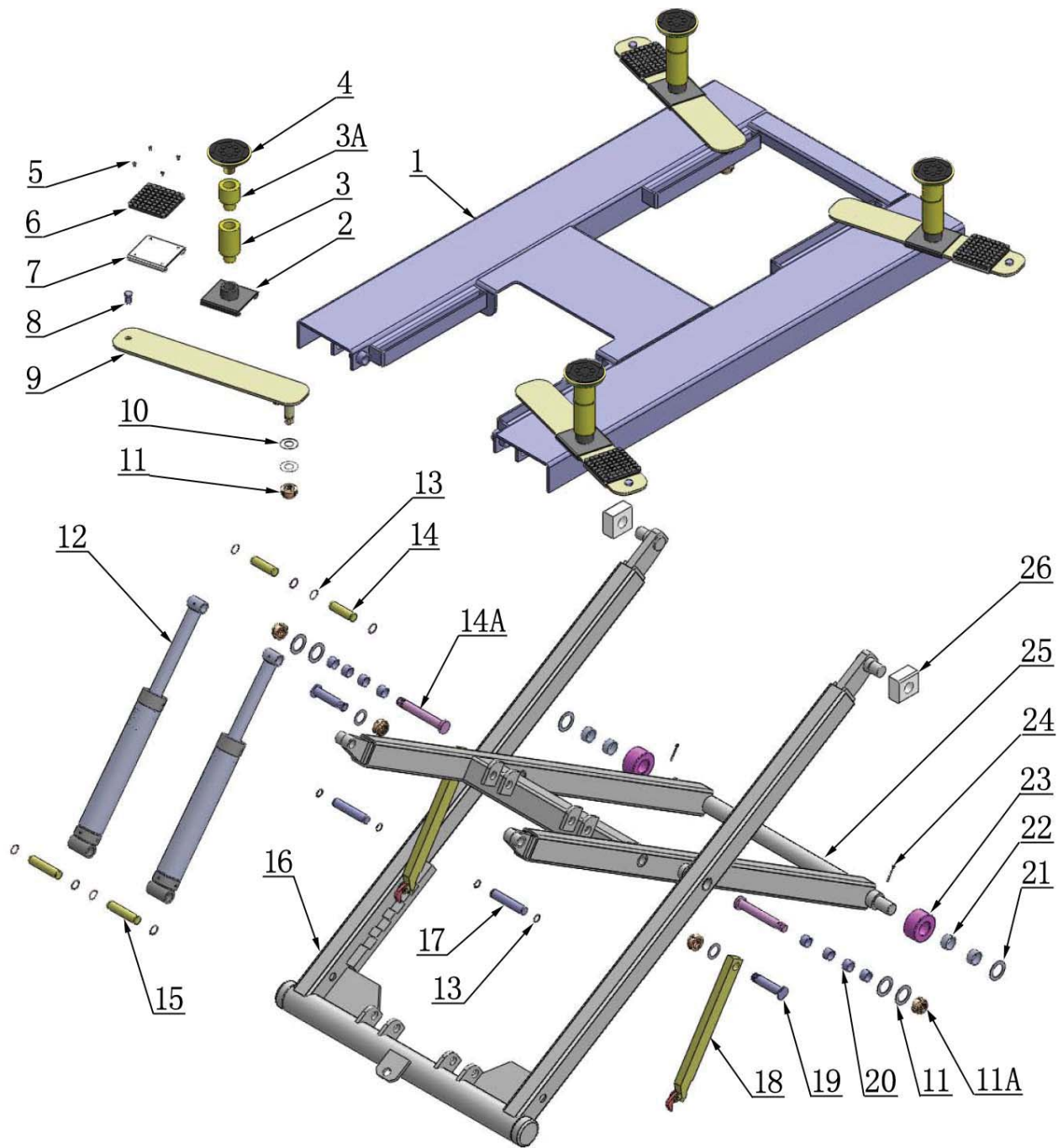


Fig. 12

Cylinder

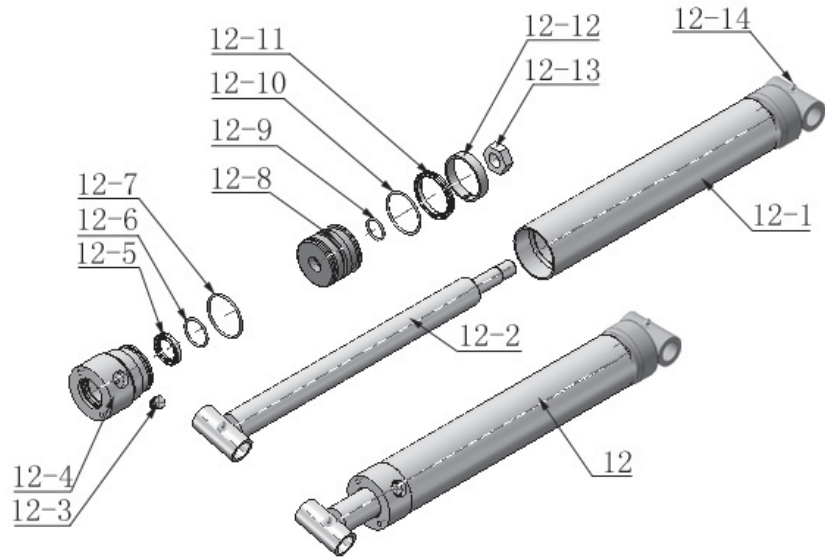


Fig. 13

Atlas Manual Power Unit

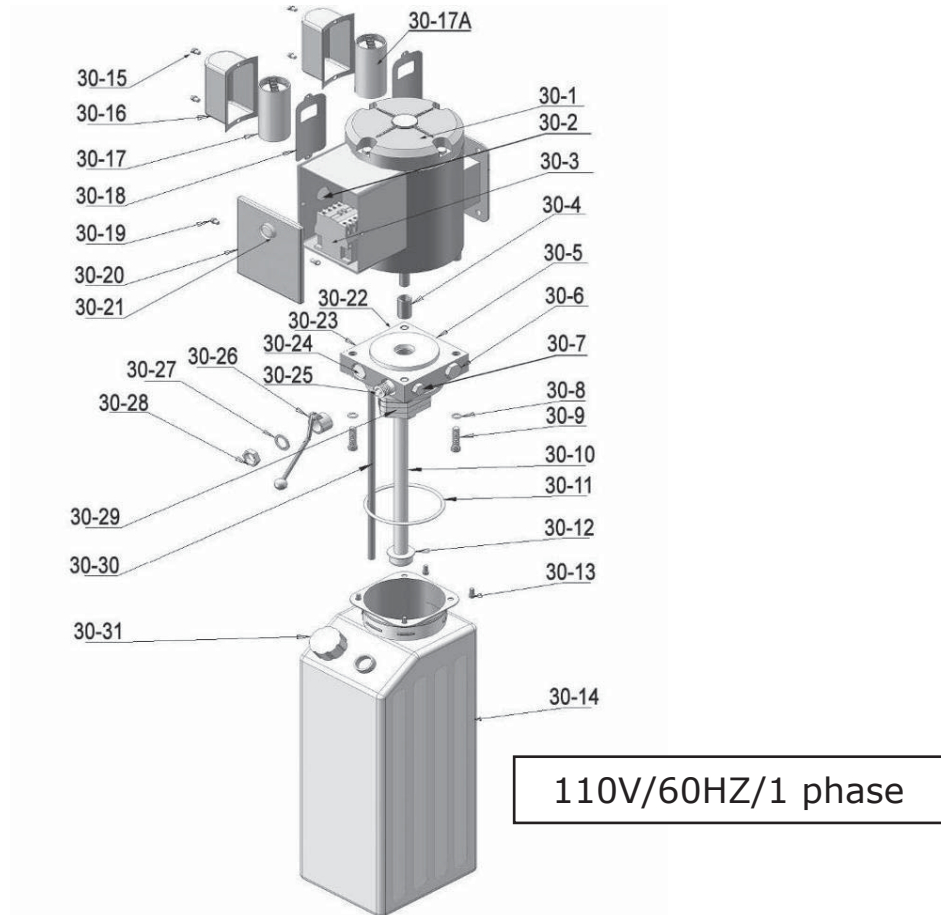


Fig. 14

Illustration of hydraulic valve for Atlas manual power unit (See Fig. 15)

110V/60HZ/1 phase

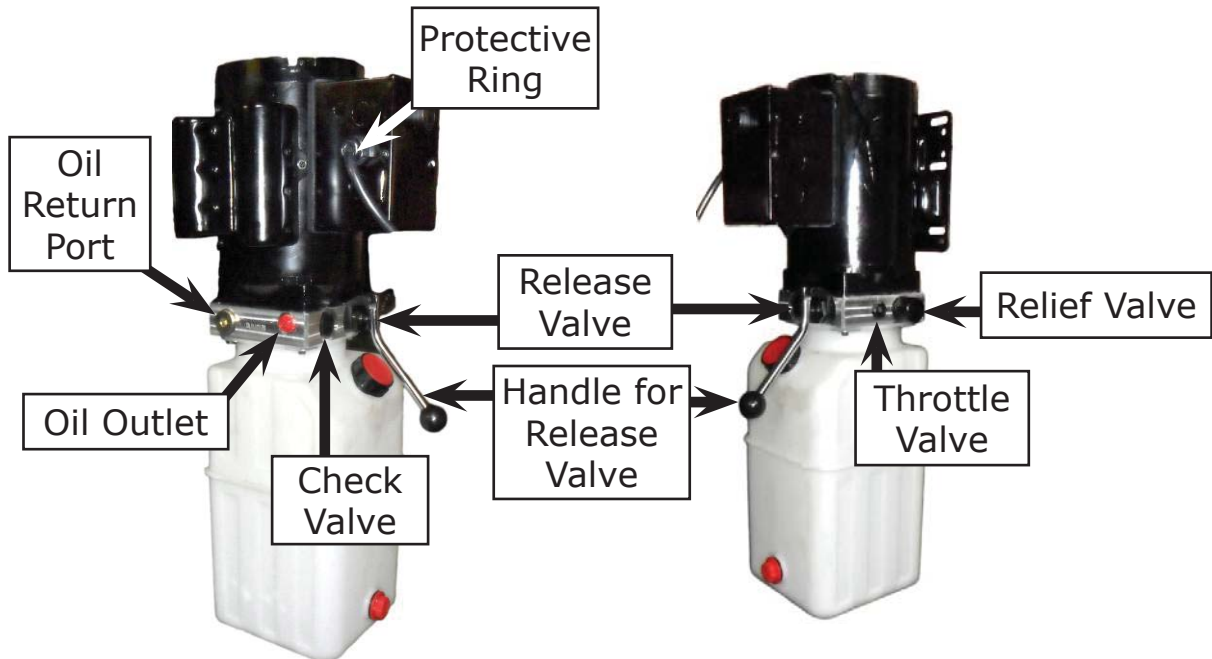
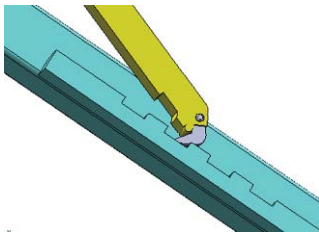


Fig. 15

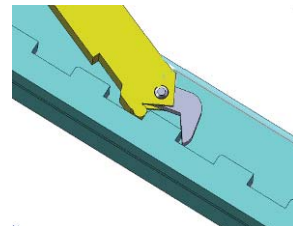
Operation Instructions

1. Install the oil hose between cylinder and power unit, connect the power source wire, then the lift is ready to use.
2. When lifting vehicle, make sure the vehicle is parked in the middle of lift, select the suitable adapters and move the arms to reach the support point of the vehicle. Rise the lift until the safety bar and the safety ladder is engaged. **(See Fig. 16)**.
3. Lower the lift: Rise the lift for 3-5 seconds until the safety lock is released **(See Fig. 17)**, then push the release handle of the power unit to lower the lift.



Safety device in locked status

Fig. 16



Safety device in released status

Fig. 17

4. Move the lift by the power unit stand **(See Fig. 18)**

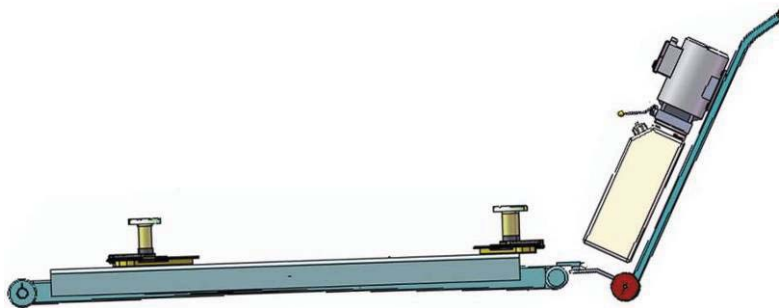


Fig. 18

Maintenance Schedule

Monthly:

1. Lubricate all moving parts with grease (See Fig. 19).

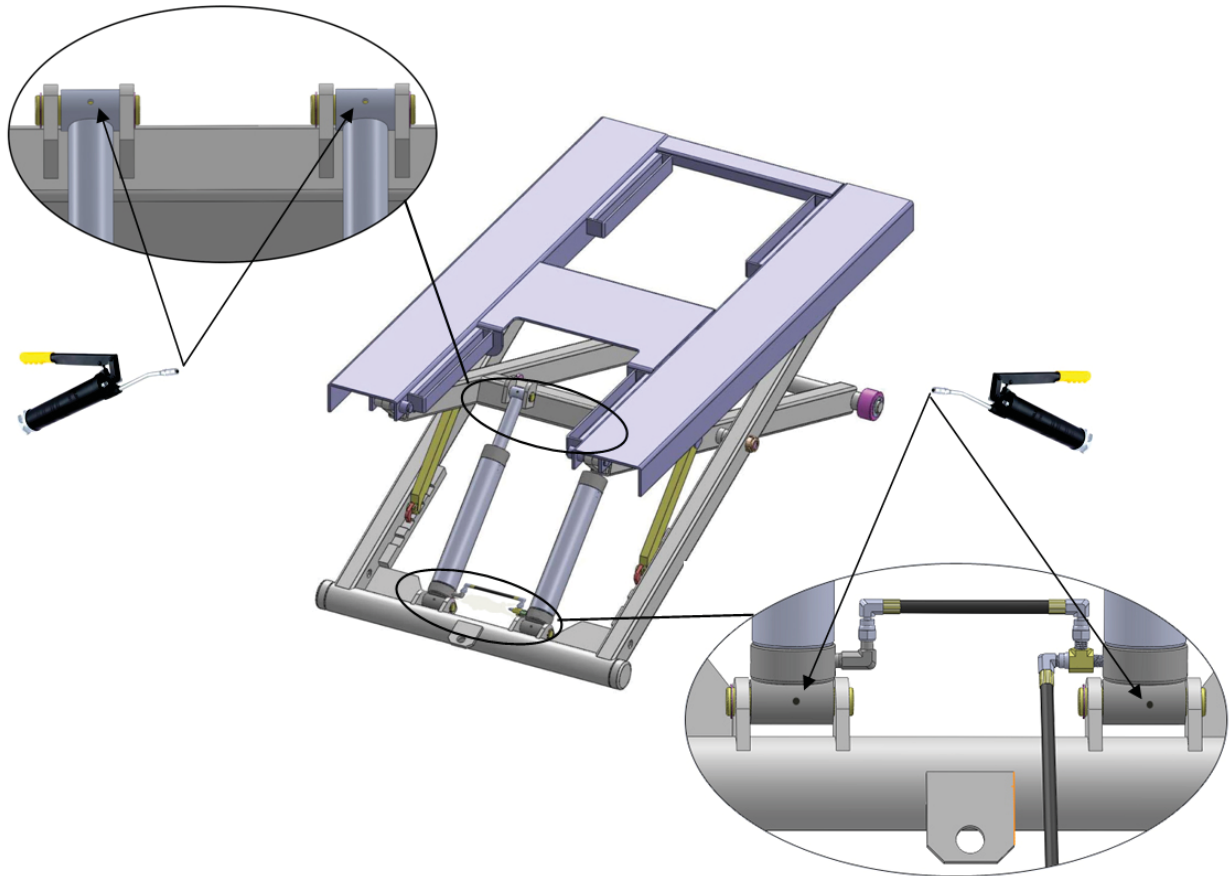


Fig. 19

2. Check all connectors, bolts and pins to insure proper mounting.
3. Make a visual inspection of all hydraulic hoses/lines for possible wear or leakage.

Every six months:

1. Make a visual inspection of all moving parts for possible wear, interference or damage.
2. Check all fastener and re-torque.

Trouble Shooting

TROUBLE	CAUSE	REMEDY
Motor does not run	<ol style="list-style-type: none"> 1. Button does not work 2. Wiring connections are not in good condition 3. Motor burned out 4. Safety Switch is damaged 5. AC contactor burned out 	<ol style="list-style-type: none"> 1. Replace button 2. Repair all wiring connections 3. Repair or replace motor 4. Replace the Safety Switch 5. Replace AC Contactor
Motor runs but the lift is not raised	<ol style="list-style-type: none"> 1. Motor runs in reverse rotation 2. Gear Pump out of operation 3. Release Valve in damage 4. Relief Valve or Check Valve in damage 5. Low oil level 6. Overload lifting or low pressure 	<ol style="list-style-type: none"> 1. Reverse two power wire 2. Repair or replace 3. Repair or replace 4. Repair or replace 5. Fill tank 6. Check load or adjust the pressure
Lift does not stay up	<ol style="list-style-type: none"> 1. Release Valve out of work 2. Relief Valve or Check Valve leakage 3. Cylinder or Fittings leaks 	Repair or replace
Lift raises slowly	<ol style="list-style-type: none"> 1. Oil line is jammed 2. Motor running on low voltage 3. Oil mixed with air 4. Gear Pump leaks 5. Overload lifting 	<ol style="list-style-type: none"> 1. Clean the oil line 2. Check Electrical System 3. Fill tank 4. Repair or replace 5. Check load
Lift can not lower	<ol style="list-style-type: none"> 1. Safety device are in activated 2. Release Valve in damage 3. Oil system is jammed 	<ol style="list-style-type: none"> 1. Release the safeties 2. Repair or replace 3. Clean the oil system

Parts List

Item	Part NO.	Description	QTY.
(See Fig. 12, Fig. 6-7)			
1	640001	Platform	1
2	640002A	Stackable Adapter Bracket	4
3	209052B	Stackable Adapter (2.5")	4
3A	209051B	Stackable Adapter (1.5")	4
4	201046A	Rubber Pad Assembly	4
4A	420138	Socket bolt	4
4B	209134	Rubber pad	4
4C	680030C	Rubber Pad Frame	4
5	680005	Cup Head Bolt	16
6	680004	Rubber Pad	4
7	640003	Supporting pad	4
8	640023A	Limit pin	4
9	640004	Supporting arm	4
10	640051	Washer	10
11	640109	Washer	4
11A	620022	Nylok nut	8
12	640007	Cylinder	2
13	206032	Snap Ring	12
14	640057	Pin For Cylinder Connecting	2
14A	640012	Scissors Pin	2
15	640006A	Cylinder Base Pin	2
16	640017B	Outer Scissor	1
17	640009	Inner Scissor Pin	2
18	640010	Safety Bar Set	2
19	640011	Safety Pin	2

Item	Part NO.	Description	QTY.
20	203004A	Bronze bush for chain pulley	8
21	420023A	Washer	2
22	420132A	Bronze Bush for Pulley	4
23	640022	Roller	2
24	630107	Split Pin	2
25	640016B	Inner Scissor	1
26	610003A	Slider Block	2
27	209062	T Fitting	1
28	640110	Oil Hose	1
29	420097	90° Fitting	1
30	640020	Manual Power Unit	1
31	209003	Hex Bolt	4
32	209005	Nylok Nut	4
33	640021	Power Unit Stand	1
34	206006	Washer	2
35	201005	Split Pin	2
36	640023	Roller	2
37A	720069	Two way valve	1
37B	209119	Pressure compensation valve	1
38	440009	Straight Fitting For Power Unit	1
39	510023	Straight Fitting	1
40	630110	Oil Hose	1
41	640500A	Parts Box	1

Parts For Hydraulic Cylinder (See Fig. 13)

12-1	640030A	Bore Weldment	2
12-2	640031A	Piston Rod	2
12-3	201034	Bleeding Plug	2
12-4	201033	Head Cap	2
12-5	209078	Dust Seal	2
12-6	201032	O - Ring	2
12-7	201035	O - Ring	2
12-8	201028	Piston	2
12-9	206069	O-Ring	2
12-10	201031	O-Ring	2
12-11	201030	Y-Ring	2
12-12	201029	Support Ring	2
12-13	206071	Nut	2
12-14	620064	Greasing Fitting	4

Atlas manual Power Unit 110V/60HZ/1 phase (See Fig. 14)

Item	Part#	Description	QTY.
30-1	209119A	Motor	1
30-2	209109	Protective Ring	1
30-3	209112	AC Contactor	1
30-4	209083A	Motor Connecting Shaft	1
30-5	209084A	Valve Body	1
30-6	209085A	Relief Valve	1
30-7	209113	Throttle Valve	1
30-8	209086A	Lock Washer	4
30-9	209087A	Socket Bolt	4
30-10	209120A	Inlet Pipe	1
30-11	209089A	O-ring	1

30-12	209090A	Filter	1
30-13	209091A	Socket Bolt	4
30-14	209121A	Reservoir	1
30-15	209093A	Cup Head Bolt with washer	4
30-16	209094A	Cover of Capacitor	2
30-17	209122A	Start Capacitor	1
30-17A	209123A	Running Capacitor	1
30-18	209096A	Rubber Pad	2
30-19	209097A	Cup Head Bolt with washer	2
30-20	209098A	Cover of Motor Terminal Box	1
30-21	209099A	Control Switch	1
30-22	209110A	Oil Return Port	1
30-23	209100A	Oil Outlet	1
30-24	209105A	Check Valve	1
30-25	209101A	Release Valve	1
30-26	209102A	Handle For Release Valve	1
30-27	209103A	Washer	1
30-28	209104A	Hex Nut	1
30-29	209130A	Gear Pump	1
30-30	209125A	Oil Return Pipe	1
30-31	209108A	Filler Cap	1

Warranty



This item is warranted for two (2) years on structural components and one (1) year on air or electric hydraulic power units, pneumatic power units, cylinders and major components from date of invoice. Wear items are covered by a 90 day warranty.

This LIMITED warranty policy does **not include a labor** warranty.

NOTE: ALL WARRANTY CLAIMS MUST BE PRE-APPROVED BY THE MANUFACTURER TO BE VALID.

The Manufacturer shall repair or replace at their option for this period those parts returned to the factory freight prepaid, which prove after inspection to be defective. This warranty will not apply unless the product is installed, used and maintained in accordance with the Manufacturers installation, operation and maintenance instructions.

This warranty applies to the ORIGINAL purchaser only, and is non-transferable. The warranty covers the products to be free of defects in material and workmanship but, does not cover normal maintenance or adjustments, damage or malfunction caused by: improper handling, installation, abuse, misuse, negligence, carelessness of operation or normal wear and tear. In addition, this warranty does not cover equipment when repairs or alterations have been made or attempted to the Manufacturer's products.

THIS WARRANTY IS EXCLUSIVE AND IS LIEU OF ALL OTHER WARRANTIES EXPRESSED OR IMPLIED INCLUDING ANY IMPLIED WARRANTY OR MERCHANTABILITY OR ANY IMPLIED WARRANTY OF FITNESS FROM A PARTICULAR PURPOSE, AND ALL SUCH IMPLIED WARRANTIES ARE EXPRESSLY EXCLUDED.

THE REMEDIES DESCRIBED ARE EXCLUSIVE AND IN NO EVENT SHALL THE MANUFACTURER, NOR ANY SALES AGENT OR OTHER COMPANY AFFILIATED WITH IT OR THEM, BE LIABLE FOR SPECIAL CONSEQUENTIAL OR INCIDENTAL DAMAGES FOR THE BREACH OF OR DELAY IN PERFORMANCE OF THIS WARRANTY. THIS INCLUDES, BUT IS NOT LIMITED TO, LOSS OF PROFIT, RENTAL OR SUBSTITUTE EQUIPMENT OR OTHER COMMERCIAL LOSS.

PRICES: Prices and specifications are subject to change without notice. All orders will be invoiced at prices prevailing at time of shipment. Prices do not include any local, state or federal taxes.

RETURNS: Products may not be returned without prior written approval from the Manufacturer.

DUE TO THE COMPETITIVENESS OF THE SELLING PRICE OF THESE LIFTS, THIS WARRANTY POLICY WILL BE STRICTLY ADMINISTERED AND ADHERED TO.